

BLINK SOLAR

Where is the address of Dubai Power Signal Base Station



Overview

Does Dubai need a power plant?

The power plant is estimated to supply Dubai with 20% of its total power needs. It will also help avoid about 30 million tonnes of carbon dioxide (CO₂) emissions by 2030. The Hassyan power plant was developed on a build-own-operate (BOO) basis using the independent power producer (IPP) model.

What is Dubai's Energy Plan?

The programme aims to produce 25% of energy from solar power, 7% from nuclear power, 7% from clean coal and the remaining 61% from gas by 2030. The power plant is estimated to supply Dubai with 20% of its total power needs. It will also help avoid about 30 million tonnes of carbon dioxide (CO₂) emissions by 2030.

Where is Hassyan power plant located?

Hassyan power plant is one of the largest power plants in GCC located in Dubai, UAE. The plant is designed to be “best in class” in terms of efficiency thus minimizing fuel consumption and fuel gas emissions and will adhere to the most stringent environmental regulations.

Why did Dubai switch from coal to natural gas?

The plant was originally designed to operate on coal as main fuel but subsequently, based on a decision by DEWA, the offtaker, with the blessing of the Chairman of the Dubai Supreme Council of Energy on 2nd February 2022, it was switched to operate on natural gas.

Where is the address of Dubai Power Signal Base Station

ESS



Power stations in UAE on the map: ? phone numbers,

Power stations: addresses on the map, ? phone numbers, websites, opening hours, ? reviews, photos, ? search for driving directions and public transport routes

United Arab Emirates Power Plants

List of power plants in United Arab Emirates from OpenStreetMap



Dewa Power Station Map

Dewa Power Station Dewa Power Station is a power station in Dubai, United Arab Emirates. Dewa Power Station is situated nearby to the suburb Dubai Marina, as well as near the ...

Jebel Ali D Power and Desalination Station

Jebel Ali D Power and Desalination Station (D ???? ?????? ?????? ???? ??? ???) is an operating power station of at least 1027-megawatts (MW) in Dubai, United Arab Emirates.

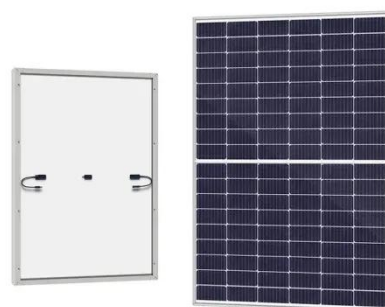


Jebel Ali Power Station Complex, Dubai, Dubai -- 2GIS

Jebel Ali Power Station Complex : addresses with entrances on the map, reviews, photos, phone numbers, opening hours and directions to these places

Hassyan Power Complex, Dubai, UAE

The 2.4GW Hassyan power complex is a gas-fired power plant project in Saih Shuaib, Dubai, United Arab Emirates (UAE). The Hassyan project is one of the biggest power ...



Hassyan IPP

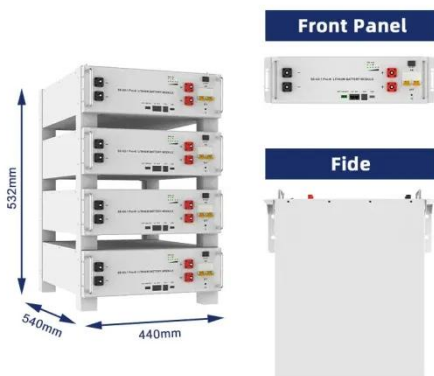
Hassyan IPP OVERVIEW Hassyan power plant is one of the largest power plants in GCC located in Dubai, UAE. The plant

is designed ...



Hassyan Power Complex, Dubai, UAE

The 2.4GW Hassyan power complex is a gas-fired power plant project in Saih Shuaib, Dubai, United Arab Emirates (UAE). The ...



Hassyan IPP

Hassyan IPP OVERVIEW Hassyan power plant is one of the largest power plants in GCC located in Dubai, UAE. The plant is designed to be "best in class" in terms of efficiency ...

DEWA

DEWA- Jebel Ali Power Station Complex Main Gate is a power station and church located in Dubai, United Arab Emirates.

The average rating of this business is 4.40 out of 5 ...



Power Station L Map

The Jebel Ali Power and Desalination Plant is a gas- and oil-powered CCGT plant combined with a desalination plant southwest of Dubai in the United Arab Emirates. Jebel Ali Power and ...

Jebel Ali Power Station Complex in UAE: branches -- 2GIS

Jebel Ali Power Station Complex : all addresses on the map, phone numbers, opening hours, photos, and reviews. Get directions to desired branch



Contact Us

For catalog requests, pricing, or partnerships, please contact:

BLINK SOLAR

Phone: +48-22-555-9876

Email: info@blinkartdesign.pl

Website: <https://www.blinkartdesign.pl>

Scan QR code to visit our website:

