

## **BLINK SOLAR**

# **What size inverter should I use for a 12v60ah battery**



## Overview

---

What size inverter for a 12V 200Ah battery?

For a 12V 200Ah battery (2.4kWh), a 2000W inverter is ideal. Formula: Inverter Wattage  $\leq$  (Battery Voltage  $\times$  Ah Rating  $\times$  0.8). Factor in surge power needs but prioritize sustained loads. Always check the battery's max discharge rate (C-rate) to avoid exceeding safe limits. When sizing for 24V or 48V systems, recalculate using the higher voltage.

What voltage should a 12V inverter run on?

The input voltage of the inverter should match the battery voltage. (For example 12v battery for 12v inverter, 24v battery for 24v inverter and 48v battery for 48v inverter Summary What Will An Inverter Run & For How Long?

.

What is the recommended battery size for an inverter?

Interpreting Results: Once you input the required data, the calculator will generate the recommended battery size in ampere-hours (Ah). For instance, if your power consumption is 500 watts, the usage time is 4 hours, and the inverter efficiency is 90%, the calculator might suggest a battery size of approximately 222 Ah.

How many batteries do I need for a 12V inverter?

Ensure the configuration matches your inverter system's specifications. Example: If you need 658 Ah at 12V and choose 12V, 200 Ah batteries, you would need: 658 Ah/ 200 Ah per battery  $\approx$  3.29 batteries Round up to 4 batteries, but keep in mind that over-sizing can be more efficient in some cases.

## What size inverter should I use for a 12v60ah battery

---



### What Size Inverter You Need (Calculations + Battery)

The size of the inverter required will be determined by the total wattage of the appliances you need to operate and the time they need to run. You also need to add a bit ...



### Determining the Solar and Inverter Size ...

As a general rule of thumb, the size of your inverter should be similar to the DC rating of your solar panel system.



### How to Calculate the Right Battery Size for Your Inverter ...

Calculating the correct battery size ensures that your inverter system can meet your power needs without leaving you in the dark during outages. An undersized battery may not provide enough ...



## Calculate Battery Size For Any Size Inverter (Using Our ...

Pairing a right size capacity battery for an inverter can be a bit confusing for most the beginners So I have made it easy for you, use the calculator below to calculate the battery ...



## Calculate Battery Size For Any Size Inverter (Using Our ...

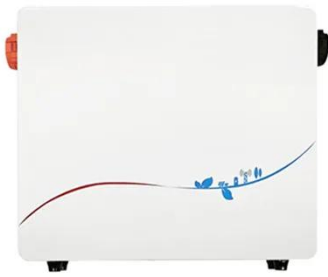
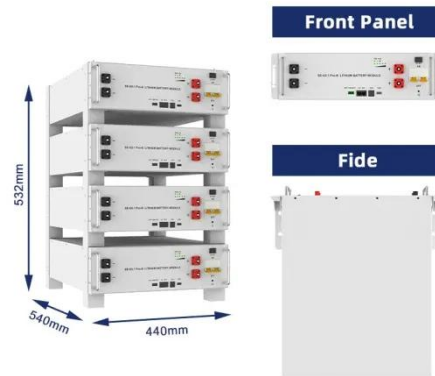
Inverter Battery Size Calculator  
How to Calculate Battery Capacity For Inverter  
How Many Batteries For 3000-Watt Inverter  
Battery Size Chart For Inverter  
Battery to Inverter Wire Size Chart  
Here's a battery size chart for any size inverter with 1 hour of load runtime  
Note! The input voltage of the inverter should match the battery voltage. (For example 12v battery for 12v inverter, 24v battery for 24v inverter and 48v battery for 48v inverter  
Summary 1. You would need around 2 100Ah lead-acid batteries to run a 12v 1000-watt inverter  
f See more on dotwatts calculatorcorp

## Calculate Battery Size for Inverter Calculator

The Calculate Battery Size for Inverter Calculator helps you determine the optimal battery capacity needed to support your inverter ...

## Choosing the Right Inverter Size for a 60Ah Battery A ...

Wondering how big an inverter you should use for a 60Ah battery? You're not alone! Whether you're powering a camping trip, a solar setup, or a backup system, selecting the correct ...

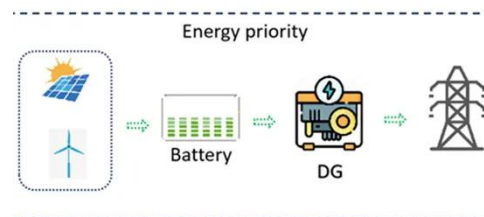


## How to Calculate the Right Battery Size for ...

Calculating the correct battery size ensures that your inverter system can meet your power needs without leaving you in the dark during outages. ...

## Determining the Solar and Inverter Size Needed to Charge a Battery

As a general rule of thumb, the size of your inverter should be similar to the DC rating of your solar panel system.



## The Only Inverter Size Chart You'll Ever Need

We have created a comprehensive inverter size chart to help you select the

correct inverter to power your appliances.



---

## What Size Inverter Do I Need? A Comprehensive Guide to Inverter ...

Additional Resources How to Size a Home Power Inverter - SRNE Solar Inverter Basics Explained - This comprehensive guide empowers you to select the right ...



---

## The Only Inverter Size Chart You'll Ever Need

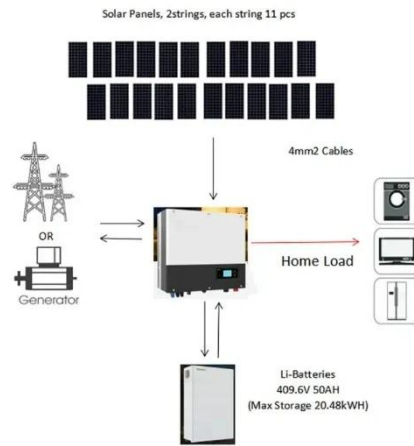
We have created a comprehensive inverter size chart to help you select the correct inverter to power your ...

---

## Calculate Battery Size for Inverter Calculator

The Calculate Battery Size for Inverter Calculator helps you determine the

optimal battery capacity needed to support your inverter system. By inputting critical parameters such ...



## Can an Inverter Be Too Big for Your Battery System?



How to Calculate the Right Inverter Size for Your Battery Match the inverter's continuous wattage rating to the battery's discharge capacity. For a 12V 200Ah battery (2.4kWh), a 2000W inverter ...

## Solar Inverter & Battery Sizing Calculator

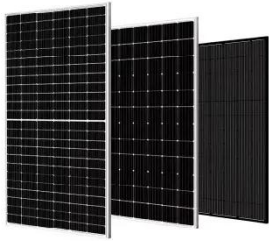
Choosing the correct inverter and battery size is crucial for every microgrid system. Our Solar Inverter and Battery Sizing Calculator provides a simple and user-friendly solution.



## Solar Inverter & Battery Sizing Calculator

Choosing the correct inverter and battery size is crucial for every microgrid

system. Our Solar Inverter and Battery Sizing Calculator ...



---

### **What Size Inverter You Need (Calculations + Battery)**

The size of the inverter required will be determined by the total wattage of the appliances you need to operate ...



---

## **Contact Us**

For catalog requests, pricing, or partnerships, please contact:

### **BLINK SOLAR**

Phone: +48-22-555-9876

Email: [info@blinkartdesign.pl](mailto:info@blinkartdesign.pl)

Website: <https://www.blinkartdesign.pl>

*Scan QR code to visit our website:*

