

BLINK SOLAR

What is the use of portable power supply



Overview

Why do you need a portable power station?

Portable power stations offer a dependable backup when the electricity goes out. They keep your essential devices running during power outages. This includes lights, medical equipment, and communication devices. In storms or natural disasters, they provide peace of mind. You stay connected and informed, which is vital in emergencies.

What is a portable power station?

A portable power station consists of a battery, a power inverter, and a set of outlets or ports for connecting electronic devices. The battery stores electrical energy, which is then converted by the power inverter into the type of electricity needed by your devices (e.g. AC or DC power).

How do portable power stations work?

Let's break down the basics to give you a clearer picture of how portable power stations work. A portable power station primarily consists of three key components: the battery, inverter, and charging unit. The battery is the heart of the power station. It's often a lithium-ion or lithium-polymer battery that stores energy for later use.

What are the components of a portable power station?

A portable power station primarily consists of three key components: the battery, inverter, and charging unit. The battery is the heart of the power station. It's often a lithium-ion or lithium-polymer battery that stores energy for later use. This is the same technology found in your smartphone, ensuring a compact and efficient power source.

What is the use of portable power supply



Portable Power Supply

A portable power supply is defined as a compact energy source that provides power for various applications, including personal mobility systems and electronic devices, and is characterized ...

What is a portable power supply?

What is a portable power supply? As the R& D Director at Lvwo Energy Technology Co., Ltd, I specialize in the development of cutting-edge ...



Complete Guide to Portable Power Supply: Pros & Cons, ...

Understanding the pros, cons, and key factors in choosing a portable power supply goes beyond capacity and ports--it's about balancing runtime, safety, and compatibility to truly solve power ...

How Does a Portable Power Station Work?

Discover how a portable power station works, including its power sources, features, and why it's perfect for emergencies.



The Ultimate Guide to Portable Power Stations: How to Choose, Use...

A portable power station, also known as a portable battery pack or a portable power supply, is a self-contained unit that stores electrical energy and can be used to power electronic devices.

Portable Power Storage Explained: Features, ...

Portable Power Storage refers to compact, mobile energy storage devices designed to provide power on the go. These systems are ...



 LFP 48V 100Ah

What is a portable power station and where is it used?

A portable power station is a rechargeable power source designed to

Highvoltage Battery



supply electricity without relying on the grid or fuel-based generators. It is commonly used in camping, ...

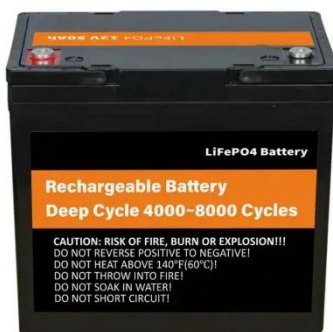
How Does a Portable Power Station Work? Everything You ...

Discover how a portable power station works, including its power sources, features, and why it's perfect for emergencies.



What are Portable Power Stations?

Power stations are lighter and easier to transport than most generators. Use Cases Generators excel in prolonged high-power scenarios (e.g., construction sites), while ...



The Ultimate Guide to Portable Power Stations: How to ...

What Is A Portable Power Station?How Does A Portable Power Station

Work? What Can You Power with A Portable Power Station? What to Look For When Shopping For A Portable Power Station How to Use and Maintain A Portable Power Station Recap Top Brands A portable power station, also known as a portable battery pack or a portable power supply, is a self-contained unit that stores electrical energy and can be used to power electronic devices. Unlike a traditional generator, which uses a combustion engine to produce electricity, a portable power station uses a rechargeable battery to store electrical energy. See more on renewable outdoors power play



Complete Guide to Portable Power Supply: Pros & Cons, ...

Understanding the pros, cons, and key factors in choosing a portable power supply goes beyond capacity and ports--it's about balancing runtime, safety, and compatibility to truly solve power ...

 **TAX FREE**    

Product Model
HJ-ESS-215A(100KW/215KWh)
HJ-ESS-115A(50KW/115KWh)

Dimensions
1600*1280*2200mm
1600*1200*2000mm

Rated Battery Capacity
215KWH/115KWH

Battery Cooling Method
Air Cooled/Liquid Cooled



The Rise of Portable Mobile Power Supply: A Comprehensive ...

In today's fast - paced world, the demand for reliable and portable power sources has skyrocketed. With the increasing use of electronic devices in various aspects of our lives, from ...

Portable Power Storage Explained: Features, Types, And Real ...

Portable Power Storage refers to compact, mobile energy storage devices designed to provide power on the go. These systems are essential for outdoor activities, ...

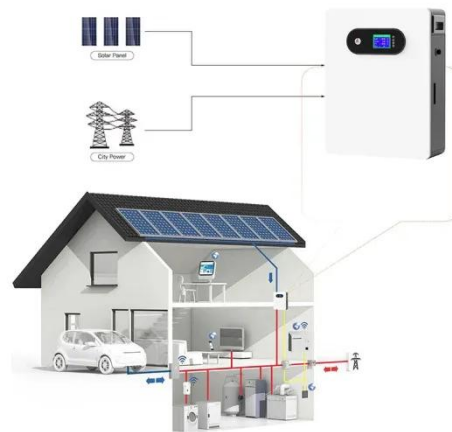


What is Portable Power Supply? Uses, How It Works & Top

A portable power supply is a compact, mobile device designed to store electrical energy and deliver it when needed. Unlike traditional power sources, these units are ...

What is a portable power supply?

What is a portable power supply? As the R& D Director at Lvwo Energy Technology Co., Ltd, I specialize in the development of cutting-edge LiFePO4 battery technologies. My expertise lies ...



Contact Us

For catalog requests, pricing, or partnerships, please contact:

BLINK SOLAR

Phone: +48-22-555-9876

Email: info@blinkartdesign.pl

Website: <https://www.blinkartdesign.pl>

Scan QR code to visit our website:

