

BLINK SOLAR

What is the continuous power of the inverter



Overview

What is wattage in inverter?

Wattage is the output power of an inverter expressed in units of Watts (W). Wattage can be divided into two categories: continuous wattage and peak or surge wattage. Continuous wattage is power that can be used stably for a long time, while peak or surge wattages are additional power that can be used in a short time.

What does rated power mean in a power inverter?

Power inverters come in many specifications, which usually include rated power and inverter peak power. Rated power is continuous output power, which refers to the power that the inverter can keep working for a long time.

What is the efficiency of an inverter?

The efficiency of an inverter refers to the percentage of input power that is converted into usable AC current, acknowledging that no system is 100% efficient and there will always be some losses. This efficiency varies based on the power demand, generally peaking when higher power levels are utilized.

When can an inverter start?

Because these inductive loads require a large current to start at the moment of startup, the appliance can start normally only when the inverter peak power is greater than the starting power of the appliance. Under normal circumstances, the peak power is equal to 2 times the rated power. 2. Different types of load

What is the continuous power of the inverter

Useful guide to inverter peak power and how to choose an inverter



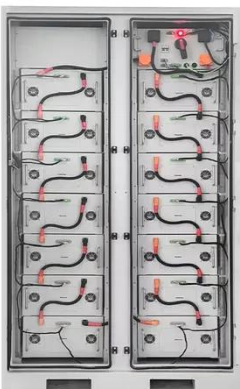
Power inverters come in many specifications, which usually include rated power and inverter peak power. Rated power is continuous output power, which refers to the power ...

What is startup vs. continuous power?

Generally speaking, the starting power is 2 to 5 times the continuous power. A 10kw inverter can start an appliance with a motor ...



To Strive forward No Energy Waste



- ✓ All in one
- ✓ 100~215kWh High-capacity
- ✓ Intelligent Integration

How To Read And Interpret An Inverter Specification

The assumption that if an inverter has enough continuous power, it is sufficient for all devices is incorrect. In fact, some devices such as refrigerators, air conditioners, and water ...

How To Read And Interpret An Inverter ...

The assumption that if an inverter has enough continuous power, it is sufficient for all devices is incorrect. In fact, some devices such as ...



How powerful an inverter should I buy? , Advance New Energy

An inverter with a peak power of 2400 watts and a continuous power of 1200 watts is a good choice. Note: If you choose a more powerful inverter, let's say 5000 watts peak power and ...

What is the difference between continuous power and peak power?

Continuous output power is the long term normal operation. It offers continuous power for your load normal working. If your electric devices draw a combined total of 600 watts, then you ...



Inverter Basics , inverter

Every inverter comes with a specified output power, indicating the maximum continuous power it can deliver, typically

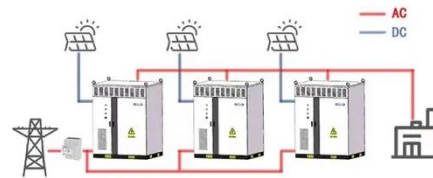


measured in watts or kilowatts. In addition to this ...

Should I choose a high or low inverter? Understanding "continuous power"

Two rated points, continuous power and surge power need to be taken into consideration when selecting a inverter. Continuous power is the level of power that an inverter can support for a ...

WORKING PRINCIPLE



 TAX FREE    



What is the difference between continuous ...

Continuous output power is the long term normal operation. It offers continuous power for your load normal working. If your electric devices ...

What is the maximum continuous power of an inverter 3kw ...

Conclusion and Call to Action In conclusion, the maximum continuous

power of a 3kw 24v inverter is a complex concept that is affected by multiple factors such as efficiency, ...



Power Inverters : A simple explanation (how-to understand ...

Continuous power is the max sustained power the inverter can provide for at least 24 hours straight Surge/Peak/Start-up/in-rush power is the max power the inverter can provide in a ...

Inverter Basics , inverter

Every inverter comes with a specified output power, indicating the maximum continuous power it can deliver, typically measured in watts ...



Useful guide to inverter peak power and how ...

Power inverters come in many specifications, which usually include



rated power and inverter peak power.
Rated power is continuous ...

Inverter Peak Power vs Rated Power: What it ...

When choosing an inverter, you often see two parameters: rated and peak power. But what do these numbers mean? And how do ...



Inverter Peak Power vs Rated Power: What it is and Why It ...

When choosing an inverter, you often see two parameters: rated and peak power. But what do these numbers mean? And how do they affect your power needs? In this guide, ...

Power Inverters : A simple explanation (how ...

Continuous power is the max sustained power the inverter can provide for at

least 24 hours straight Surge/Peak/Start-up/in-rush power is the max ...



OEM service

Hot Colors:



Color can be customized
more questions just do not hesitate to contact us

LOGO Position: (Screen printing)



What is startup vs. continuous power?

Generally speaking, the starting power is 2 to 5 times the continuous power. A 10kw inverter can start an appliance with a motor with a continuous power of approximately 5kw.

How powerful an inverter should I buy?

An inverter with a peak power of 2400 watts and a continuous power of 1200 watts is a good choice. Note: If you choose a more powerful inverter, let's ...



Contact Us

For catalog requests, pricing, or partnerships, please contact:

BLINK SOLAR

Phone: +48-22-555-9876

Email: info@blinkartdesign.pl

Website: <https://www.blinkartdesign.pl>

Scan QR code to visit our website:

