

**BLINK SOLAR**

# **What is the communication capability of 5g base stations**



## Overview

---

What is a 5G base station?

As the world continues its transition into the era of 5G, the demand for faster and more reliable wireless communication is skyrocketing. Central to this transformation are 5G base stations, the backbone of the next-generation network. These base stations are pivotal in delivering the high-speed, low-latency connectivity that 5G promises.

What are the advantages of a 5G base station?

**Massive MIMO:** The use of a large number of antennas allows the base station to serve multiple users simultaneously by forming multiple beams and spatially multiplexing signals. **Modulation Techniques:** 5G base stations support advanced modulation schemes, such as 256-QAM (Quadrature Amplitude Modulation), to achieve higher data rates.

What frequency bands do 5G base stations use?

**Utilization of Frequency Spectrum:** 5g Base Stations Operate in specific Frequency Bands Allocated for 5G Communication. These bands include Sub-6 GHz Frequencies for Broader Coverage and Millimeter-Wave (Mmwave) Frequencies for Higher Data Rates.

Does 5G use more energy than 4G?

In particular, the 5G base station significantly requires more energy compared to the 4G system, especially when higher frequencies are in action. Due to the very short range of millimeter waves, several stations are required for getting complete coverage. This in turn, increases the overall energy consumption.

## What is the communication capability of 5g base stations

---



### Types of 5G NR Base Stations: A Comprehensive Overview

Understanding these base stations helps network operators and businesses optimize 5G deployment strategies to meet diverse connectivity needs. As 5G continues to ...

---

### How 5G Base Stations Are Powering the Future of Connectivity

The dawn of the 5G era has ushered in unprecedented advancements in connectivity, transforming industries, lifestyles, and global economies. At the heart of this ...

Energy storage(KWH)

**102.4kWh**

Nominal voltage(Vdc)

**512V**

Outdoor All-in-one ESS cabinet



---

### FLEXIBLE SETTING OF MULTIPLE WORKING MODES

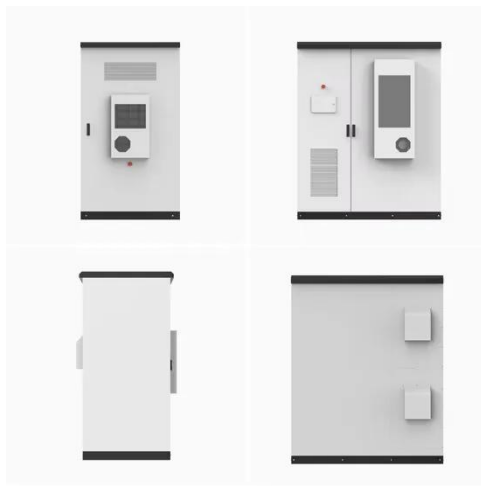


### What Is a Base Station? Exploring the Core of 5G Networks ...

Base stations are the core of mobile communication, and with the rise of 5G, thermal and energy challenges are increasing. This article explains the definition, structure, ...

## An Introduction to 5G and How MPS Products Can ...

5G wireless devices communicate via radio waves sent to and received from cellular base stations (also called nodes) using fixed antennas. These devices communicate ...



## What is a 5G Base Station?

As the world continues its transition into the era of 5G, the demand for faster and more reliable wireless communication is skyrocketing. Central to this transformation are 5G ...

## base station in 5g

A 5G base station is a complex system that integrates advanced RF technology, digital signal processing, and network architecture to deliver high-performance wireless ...



## Learn What a 5G Base Station Is and Why It's Important

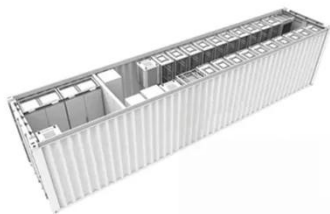
A 5G base station is the heart of the fifth-



generation mobile network, enabling far higher speeds and lower latency, as well as new levels of connectivity. Referred to as ...

## 5G Base Stations Driving Mobile Connectivity Growth

The market for 5G base stations is set for rapid growth, driven by government investments and the increasing demand for enhanced mobile connectivity. As this ...



## What Is 5G Base Station?

Base stations, also called public mobile communication base stations, are interface devices for mobile devices to access the Internet. They are also a form of radio stations, which ...

## Contact Us

For catalog requests, pricing, or partnerships, please contact:

**BLINK SOLAR**

Phone: +48-22-555-9876

Email: [info@blinkartdesign.pl](mailto:info@blinkartdesign.pl)

Website: <https://www.blinkartdesign.pl>

*Scan QR code to visit our website:*

