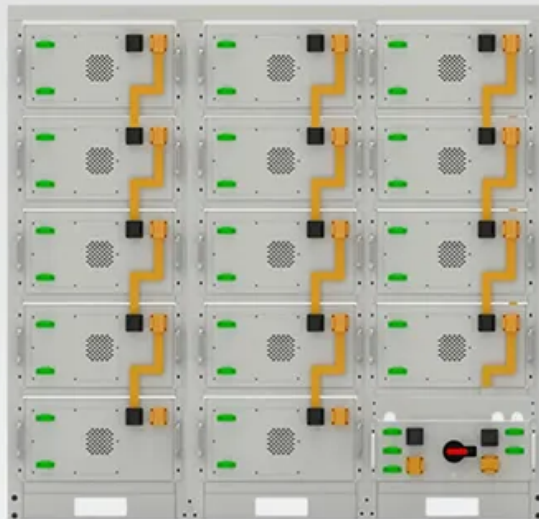


BLINK SOLAR

What equipment does the solar energy system include



Battery String-S224

- 1C Charge/Discharge
- Easy configuration and maintenance
- Power supply can be single battery string or parallel battery strings



Overview

What are the different types of solar energy equipment?

From photovoltaic (PV) panels to inverters and batteries, these components form the backbone of any solar power system. This blog explores the various types of solar energy equipment, their functions, and how they contribute to creating efficient and sustainable solar power systems.

What is solar energy equipment?

As the world shifts toward renewable energy, solar energy equipment plays a critical role in harnessing the power of the sun. From photovoltaic (PV) panels to inverters and batteries, these components form the backbone of any solar power system.

What is solar equipment & how does it work?

The installation of the equipment makes it possible to capture solar energy and transform it into the electricity required for the particular residence or place of business. Several essential parts, including solar panels, inverters, and racking systems, are also included in the solar equipment.

What equipment do you need to go solar?

To go solar, you'll need solar panels, inverters, racking equipment, and performance monitoring equipment--at a minimum. Depending on where you live, you may also consider a solar battery. The components of a solar panel system are pretty simple.

What equipment does the solar energy system include



Best 6 Solar Energy Equipment: A Complete Guidance

The components of a photovoltaic (PV) system include one or more solar panels, an inverter, and additional mechanical and electrical components that harness solar energy equipment to ...

What Are The Main Components Of A Solar Power System?

Discover the main components of a solar power system, from solar panels and inverters to batteries, charge controllers, and monitoring tools. Learn how each part works together to ...



51.2V 150AH, 7.68KWH



- IP65/IP55 OUTDOOR CABINET
- OUTDOOR TELECOM CABINET
- OUTDOOR ENERGY STORAGE CABINET
- 19 INCH

Solar Power System Equipment: Needs, Costs, Pros, And Cons

Hybrid solar systems use the same equipment as grid-tied systems but also include a charge controller, energy storage system, and a hybrid inverter capable of connecting the solar ...

What Equipment Is Used For Solar Energy: A Comprehensive

...

Solar energy is a rapidly growing and environmental-friendly source of power that harnesses energy from the sun to generate electricity. To understand and utilize solar energy ...



What is Solar Equipment? A Complete Guide on ...

Solar equipment refers to the components of a solar system that work together to convert sunlight into electricity. It includes solar panels, inverters, mounting structures, and ...



Balance of Solar PV Systems

Typical BOS components include solar batteries, inverters, and charge controllers. Balance of system costs cover all the expenses incurred in purchasing and installing a solar ...



8 Essential Solar Equipment Parts Explained 2025

Learn about the eight key solar equipment components--panels, inverters, batteries, and more--to build a complete and efficient system in 2025.



What are Solar Energy Equipment?

Discover the essential equipment used in solar energy systems! Learn more about solar panels, inverters, batteries, charge controllers, and more. Learn about the equipment needed for ...

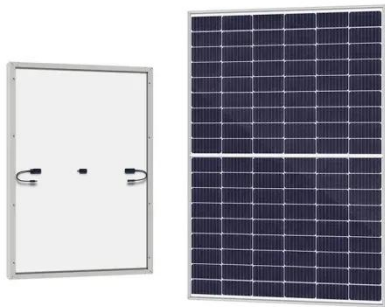


What is solar energy system equipment? , NenPower

Implementing a solar energy system involves multiple interconnected components meticulously designed to optimize energy generation and utilization. Selecting appropriate ...

Why Solar Panels Need Essential Equipment: A Complete Guide

Solar panels are a vital component of solar energy systems, but they need essential equipment to function effectively. This equipment includes inverters, batteries, ...



What is Solar Equipment? A Complete Guide on ...

Solar Panels Mounting Structures Solar Inverters Energy Meter Or Bi-Directional Meter Solar Accessories Conclusion FAQs If you are planning a switch to solar energy, you already know the benefits of using a solar panel but do you know how it works? Here is a brief synopsis: The ultimate requirement -- solar panels are responsible for harnessing electricity from sunlight. Each solar panel comprises individual solar cells that capture the sun's rays. Every cell has sil See more on solarsquare Solinved - Solar Enerji Ekipmanlar?

What are Solar Energy Equipment? - Solinved

Discover the essential equipment used in solar energy systems! Learn more about solar panels, inverters, batteries, charge controllers, and more. Learn about the equipment needed for ...

Contact Us

For catalog requests, pricing, or partnerships, please contact:

BLINK SOLAR

Phone: +48-22-555-9876

Email: info@blinkartdesign.pl

Website: <https://www.blinkartdesign.pl>

Scan QR code to visit our website:

