

## **BLINK SOLAR**

# **What does base station communication module mean**



## Overview

---

A base station is an integral component of wireless communication networks, serving as a central point that manages the transmission and reception of signals between cellular networks and mobile devices. What is a base station in a telecommunications network?

A base station is a critical component in a telecommunications network. A fixed transceiver that acts as the central communication hub for one or more wireless mobile client devices. In the context of cellular networks, it facilitates wireless communication between mobile devices and the core network.

What is a base transceiver station?

A Base Transceiver Station comprises various components that work cohesively to establish and maintain communication with mobile devices. These components handle everything from signal processing and transmission to power management and network interfacing, ensuring seamless connectivity and optimal network performance.

What are base stations & how do they work?

Base stations are the critical components that enable mobile phones and other devices to connect to cellular networks. Here's how they work in a typical mobile network: Signal Transmission and Reception: Mobile devices communicate with the nearest base station via radio waves.

Why are base stations important in cellular communication?

Base stations are important in the cellular communication as it facilitate seamless communication between mobile devices and the network communication. The demand for efficient data transmission are increased as we are advancing towards new technologies such as 5G and other data intensive applications.

## What does base station communication module mean

---



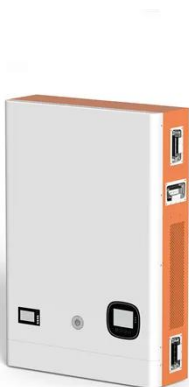
### GSM Concepts

The BTS holds the equipment used for sending and receiving radio signals and equipment for performing the communication encryption ...

---

### What is a Base Station in ...

What is a Base Station? A base station is a critical component in a telecommunications network. A fixed transceiver that acts as the central ...



---

### Understanding the Basics: What is a Base ...

In today's digitally connected world, understanding the technology that makes communication possible is more important than ...

## Understanding the Basics: What is a Base ...

In today's digitally connected world, understanding the ...



✓ 50KW/100KWH

✓ HIGHER POWER OUTPUT  
IN OFF-GRID MODE

✓ CONVENIENT OPERATION  
& MAINTENANCE

✓ PRE-WIRED

## Base Station Controller: Key Role in Mobile Networks

Discover the role of a Base Station Controller in mobile communications and how it ensures your calls and data stay connected on the go.

## 5G mmWave Guide A Resource for Operators

Accompanying the Guide is a new publicly available GSMA fact sheet designed to provide high-level information on 5G mmWave, the benefits and safety. The Guide is part of ...



## What Is A Base Station?

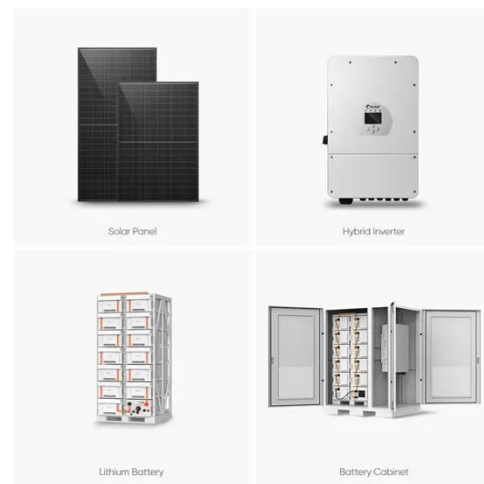
A base station is an integral component of wireless communication networks, serving as a central point that manages



the transmission and reception of signals between ...

## What is a Base Station? -- From Communication Core to ...

Base stations are the core of mobile communication, and with the rise of 5G, thermal and energy challenges are increasing. This article explains the definition, structure, ...



## Base Stations

The present-day tele-space is incomplete without the base stations as these constitute an important part of the modern-day scheme of wireless communications. They are ...

## Satellite Ground Station Basics

Explore the fundamentals of satellite ground stations, including their architecture, receiving and transmitting

processes, and key specifications.



### **What Is the Role of a Base Station in Wireless Communication?**

Base stations are the backbone of wireless communication networks, playing a pivotal role in signal transmission, network reliability, and high-speed data connectivity. As ...

### **What Is a Telecom Base Station and How Does It Work?**

A base station (BS)--short for Base Transceiver Station--is a core component of a mobile communication network. It serves as the interface between mobile devices and the operator's ...



### **base transceiver station components**

A Base Transceiver Station comprises various components that work

cohesively to establish and maintain communication with mobile ...



---

### MS (Mobile station)

A Mobile Station (MS) is a term used in mobile communications to refer to a device that can communicate wirelessly with ...



---

### Base Station , Analog Devices

Base Station What is a Base Station?  
Definition A base station (or basestation) is a wireless transceiver at a fixed location (e.g. atop a telephone pole) which is part of a wireless ...



---

### base transceiver station components

A Base Transceiver Station comprises various components that work

cohesively to establish and maintain communication with mobile devices. These components handle ...



## Understanding Base Stations: The Backbone of Wireless Communication

Base Station But what exactly is a base station, and how does it work in wireless communication networks? This article explores the concept of base stations, their functions, ...

## Understanding the Basics: What is a Base Transceiver Station?

In today's digitally connected world, understanding the technology that makes communication possible is more important than ever. One key component in mobile networks ...



## Base Transceiver Station

Introduction to Base Transceiver Station (BTS) in Computer Science Context A base transceiver station (BTS) is a

critical network component that serves as the primary hardware interface ...



## Complete Guide to 5G Base Station

...

Explore how 5G base stations are built--from site planning and cabinet installation to power systems and cooling solutions. Learn the ...



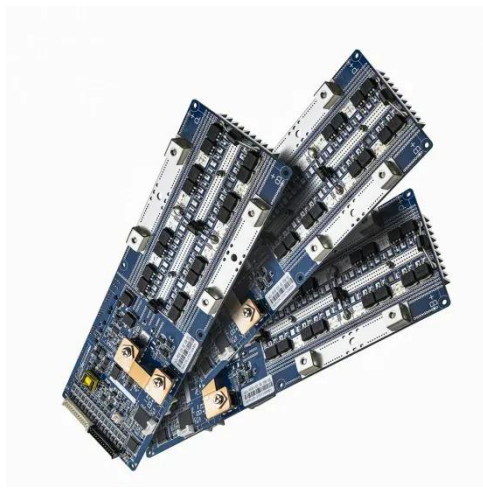
## Basestation

A base station (BS) is defined as a fixed communication facility that manages radio resources for one or more base transceiver stations (BTSs), facilitating radio channel setup, frequency ...

## What is a Base Station in Telecommunications?

What is a Base Station? A base station is a critical component in a

telecommunications network. A fixed transceiver that acts as the central communication hub for one or more wireless mobile ...



## Base Stations

The present-day tele-space is incomplete without the base stations as these constitute an important part of the modern-day scheme ...

## Contact Us

For catalog requests, pricing, or partnerships, please contact:

### **BLINK SOLAR**

Phone: +48-22-555-9876

Email: [info@blinkartdesign.pl](mailto:info@blinkartdesign.pl)

Website: <https://www.blinkartdesign.pl>

*Scan QR code to visit our website:*

