

BLINK SOLAR

The installation angle of solar panels on the roof



Overview

What angle should solar panels be installed?

The optimal installation angle for solar panels matches the measurement value of your geographical location. People who live at locations measuring 35 degrees should usually select 35-degree roof pitches for optimal performance. Dynamic factors throughout the year, together with sun position, change the effectiveness of the recommended angle.

How important is angle & orientation when installing solar panels?

When it comes to installing solar panels, angle and orientation are just as important as the panels themselves. The solar panel's best angle determines how much sunlight your panels capture throughout the year, directly impacting energy production and ROI.

Why do solar panels need to be angled?

A roof that is properly angled provides solar panels with maximum sunlight exposure during daytime and throughout every season, thus maximizing their energy-generating potential. Your system, together with your financial savings, will suffer from reduced effectiveness when your roof is set at an improper angle.

How do you measure a roof pitch for solar panels?

The ratio of vertical rise to horizontal run for roof pitch measurement becomes 6:12. The optimal installation angle for solar panels matches the measurement value of your geographical location. People who live at locations measuring 35 degrees should usually select 35-degree roof pitches for optimal performance.

The installation angle of solar panels on the roof



Solar Panel Best Angle , Tilt & Orientation Guide 2025

Find the best solar panel angle for your location. Learn tilt formulas, seasonal adjustments, and tips to maximize energy efficiency in 2025.

How does the angle of a roof affect the installation of solar panels

They can also ensure that the panels are installed correctly so that they work efficiently for years to come. In conclusion, the angle of your roof plays a significant role in the ...



Optimizing Roof Angle And Orientation For Solar Installation

Why Orientation Matters for Solar Installations Orientation refers to the direction your roof faces and can drastically impact how much sunlight your solar panels receive daily. ...



Understanding Roof Pitch and Solar Panel Angles for Better

...

Additionally, a well-optimized solar energy system enhances property value, as future buyers recognize the benefits of lower energy bills and a reduced carbon footprint. ...



The Best Angle for Solar Panel Installation

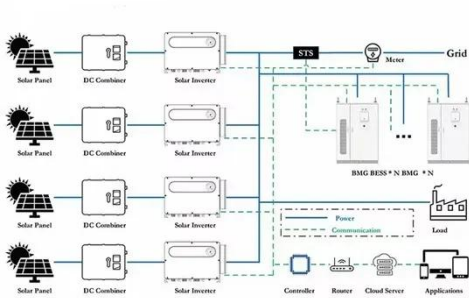
The importance of solar panel orientation, the best angle for solar panels, and the factors that influence the optimum solar installation ...

Solar Panel Best Angle , Tilt & Orientation ...

Find the best solar panel angle for your location. Learn tilt formulas, seasonal adjustments, and tips to maximize energy efficiency in ...



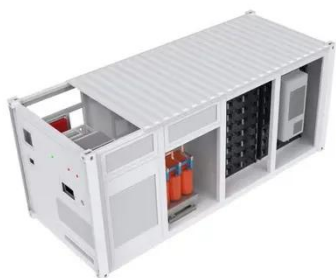
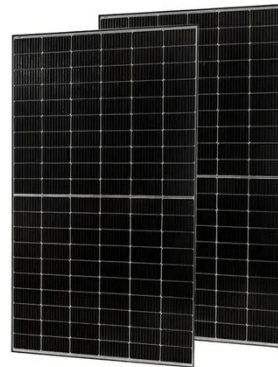
Roof Pitch for Solar Panels: Best Angles for Maximum Efficiency



The optimal installation angle for solar panels matches the measurement value of your geographical location. People who live at locations measuring 35 degrees should usually ...

What's the Best Angle for Solar Panels? , EnergySage

In fact, direction and angle usually don't get in the way of a productive rooftop solar installation. The bigger blockers tend to be shading, roof size, local electricity prices, and local ...



The Best Angle for Solar Panel Installation

The importance of solar panel orientation, the best angle for solar panels, and the factors that influence the optimum solar installation angle.

Optimal Roof Angle for Solar Panels: A Practical Guide to ...

The optimal roof angle for solar panels balances sun exposure with seasonal

shifts, roof constraints, and installation costs. This guide explains how tilt and orientation influence ...

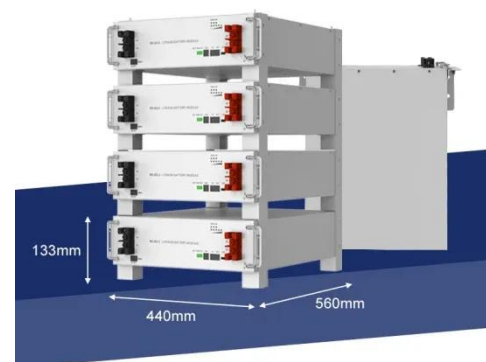


How does the angle of a roof affect the ...

They can also ensure that the panels are installed correctly so that they work efficiently for years to come. In conclusion, the angle of ...

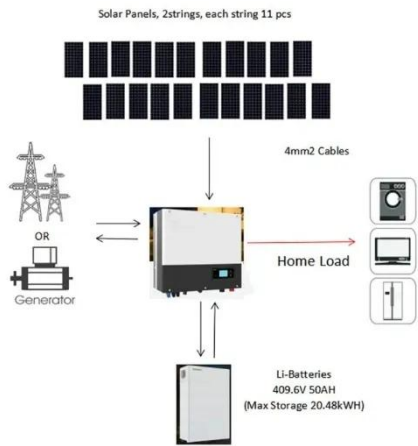
What's the Best Angle for Solar Panels to Get Maximum ...

Learn what goes into determining the best angle for solar panels to optimize energy output and how you can ensure your solar system is designed to maximize efficiency of ...



Understanding Roof Pitch and Its Impact on Solar Panel

The angle of a roof can significantly impact the efficiency and performance of



solar panels, especially when mounting solar panels to metal roof. Understanding how pitch ...

Contact Us

For catalog requests, pricing, or partnerships, please contact:

BLINK SOLAR

Phone: +48-22-555-9876

Email: info@blinkartdesign.pl

Website: <https://www.blinkartdesign.pl>

Scan QR code to visit our website:

