

BLINK SOLAR

Solar inverter network connection

- ☑ High energy density and long cycle life
- ☑ Modular structure

- No need to replace the battery
- Shorter charging time
- Meets 99% EV car



Overview

To enable seamless data exchange, solar inverters typically support three protocols: Wi-Fi, Ethernet, and RS-485, each with its unique advantages for different installation environments and scalability needs. How do I connect a solar inverter to WiFi?

How to Connect Solar Inverter to WiFi: A Step-by-Step Guide for Eco-Friendly Tech Enthusiasts - Solar Panel Installation, Mounting, Settings, and Repair. To connect a solar inverter to Wi-Fi, you generally need to have a smartphone or computer available to configure the network settings for the inverter's built-in Wi-Fi access point.

How do I connect my Growatt solar inverter to WiFi?

This guide provides a step-by-step process for connecting your Growatt solar inverter to WiFi, enabling you to monitor and manage your solar energy system effortlessly. To connect your solar inverter to WiFi, access your device's WiFi settings and connect to the inverter's temporary WiFi network.

Do solar inverters have WiFi?

Most modern inverters come with built-in WiFi capabilities, giving homeowners the ability to track energy production, system efficiency, and even receive alerts when there's a problem. This guide will help you connect your solar inverter to WiFi, using common inverter models as a general reference.

How do I connect my solar inverter to my mobile device?

The process includes several steps: first, power up your inverter; next, go to your mobile device's Wi-Fi settings and look for a network named after your inverter's serial number (usually begins with "Solar-WiFi" followed by its serial number). Connect to this network using the default password, typically '12345678'.

Solar inverter network connection



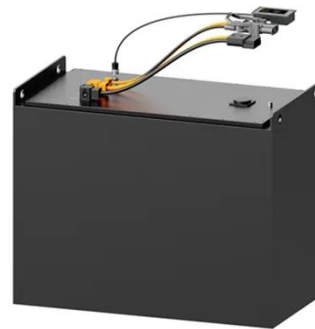
How to Connect Solar Inverter to WiFi: A Step-by-Step Guide

...

Learn how to connect solar inverter to WiFi with our simple, step-by-step guide. Perfect for eco-friendly tech enthusiasts keen on renewable energy.

Wi-Fi Solar Inverters: How They Work & How ...

Fortunately, practically all modern solar inverters come with monitoring capabilities through the convenience of a Wi-Fi connection, ...



Tips for Troubleshooting Solar Inverter WiFi Connectivity Issues

Solar inverters are essential components of solar systems, converting DC power generated by solar panels into AC power compatible with the electricity grid. Many modern ...

How to Connect Solar Inverter to WiFi , Easy Setup Guide 2025

Connect your solar inverter to WiFi for real-time monitoring & better efficiency. Follow our guide to optimize your solar system today!



Inverter

Select the desired WLAN and enter the password. Tap Connect to connect to the router again. When the connection status turns green, the router is successfully connected. * ...

How to Connect a Solar Inverter to WiFi: A Step-by-Step ...

As solar technology evolves, modern solar inverters come with smart monitoring features that allow users to track their system's performance remotely. Connecting your solar ...



TNB Technical Guidebook on Grid-interconnection of ...

PV systems comprise of a number of



components that are integral to its functioning. In grid-connected operation, PV panels output electrical energy converted from ...

How to Connect Your Solar Inverter to WiFi

Step 5: Verify the Connection Wait for the inverter to connect: It may take a minute or two for the inverter to establish a connection to your WiFi network. Check connection status: ...



Plan Internet Connection for Solar Inverter

For Tesla Solar Inverter with Site Controller (Tesla P/N 1538000- 45 -y), an Ethernet connection can be established: Ethernet cable must be CAT5 (24 AWG) cable at ...

How to Connect Solar Inverter to WiFi , Easy ...

Connect your solar inverter to WiFi for real-time monitoring & better efficiency.

Follow our guide to optimize your solar system today!



Solar energy inverter communication protocols: Wi-Fi, ...

Wi-Fi Communication for Solar Energy Inverter By plugging into your home or facility's wireless network, solar inverters broadcast data such as instantaneous output power, ...

How To Connect Solar Inverter With Wifi

To connect your solar inverter to WiFi, access your device's WiFi settings and connect to the inverter's temporary WiFi network. Open the Solar Edge App and follow the on ...



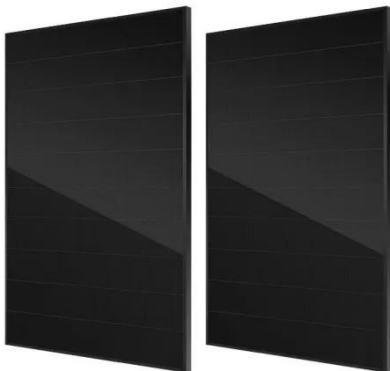
The Ultimate Guide to Setting Up a Solar Inverter WiFi Module



Whether you're a seasoned solar enthusiast or a novice seeking to optimize your solar investment, this guide will equip you with the knowledge and skills to establish a ...

Configuring Inverter Communication

To connect to your Wi-Fi network, click "configure. Select your preferred wireless network and insert a password, then click "join."You will now be connected to your Wi-Fi network. To ...



How To Connect Solar Inverter To WiFi - TechFine Step-by ...

With TechFine's intelligent solar inverters equipped with integrated WiFi modules for solar inverters, users can now monitor their system remotely via a smartphone or web portal. ...

Contact Us

For catalog requests, pricing, or partnerships, please contact:

BLINK SOLAR

Phone: +48-22-555-9876

Email: info@blinkartdesign.pl

Website: <https://www.blinkartdesign.pl>

Scan QR code to visit our website:

