

BLINK SOLAR

Solar inverter fully loaded



Overview

Do solar panels need an inverter?

If you are in a solar RV or live off the grid, you undoubtedly have an inverter in your system. It's the perfect match for solar panels because it converts DC power to AC power. Most inverters have a display which indicates the battery charging status. If there is no display, a light or sound will notify you when the battery is fully charged.

Can a solar inverter charge a battery?

In hybrid systems, the inverter may also act as a charger. Otherwise, an external solar charge controller manages panel-to-battery charging. Still, the size of your inverter must match your battery voltage and desired AC output. Step 1 - Understand Continuous and Peak Loads Calculate the total continuous load in watts and the peak (surge) load:.

What size solar inverter do I Need?

Inverter Size: 1000W (with 2000W surge), 12V compatible Adding Load and Battery Expansion If you plan to add more batteries or higher AC loads in the future, select a modular inverter and oversize your solar system slightly to accommodate growth.

How secure is a battery inverter?

Because it only uses the battery bank's available power, the inverter is also secure. Batteries used in inverters are powered by chemical processes, and for these processes to take place, the battery must be completely charged. There won't be any problems here if the inverter is the proper size.

Solar inverter fully loaded

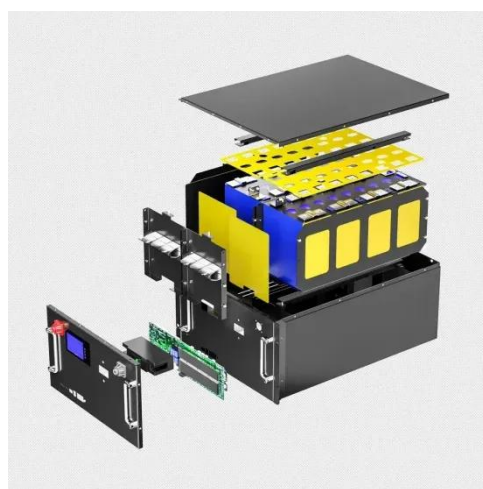


How to Calculate Solar Panel, Inverter, Battery ...

In this post I have explained through calculations how to select and interface the solar panel, inverter and charger controller combinations ...

What Happens When Your Solar Battery Reaches Full Capacity?

Whenever the solar battery is fully charged, the inverter and charge controller step in to perform their task. Together, they mitigate the risk of overcharging by sending power ...

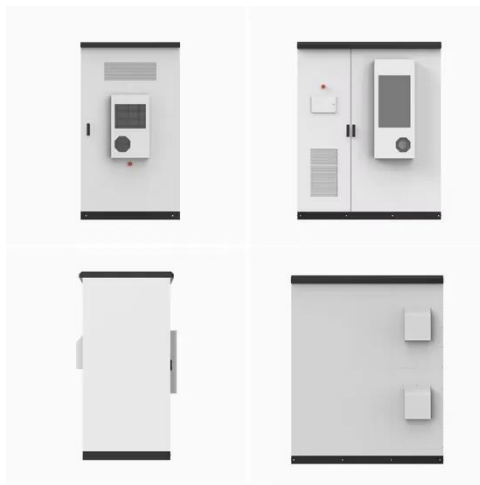


What to Do When Inverter Battery is Fully Charged?

As inverter batteries store solar energy, it is crucial to understand when they are completely charged to prevent overcharging. In this article, we will discuss what to do when ...

All-in-one solar charge inverter User Manual

This manual contains all safety, installation and operating instructions for the HYP Series all-in-one solar storage inverter.



What Happens When Your Solar Battery ...

Whenever the solar battery is fully charged, the inverter and charge controller step in to perform their task. Together, they mitigate the ...

How to Know If Inverter Battery Fully Charged?

There are also inverter battery low and overload indicators. Some inverters incorporate sound. When the battery is fully charged, a "beep" will notify you. There are also ...



How to Calculate Solar Panel, Inverter, Battery Parameters

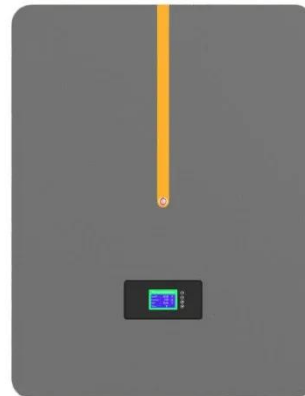
In this post I have explained through calculations how to select and interface



the solar panel, inverter and charger controller combinations correctly, for acquiring the most ...

Determining the Solar and Inverter Size ...

If your solar array is too small, your batteries won't charge fully. If your inverter is underpowered, it may not handle your load. This guide ...



Determining the Solar and Inverter Size Needed to Charge a ...

If your solar array is too small, your batteries won't charge fully. If your inverter is underpowered, it may not handle your load. This guide will walk you through everything you ...

What Happens to Solar Power When Batteries ...

Explore what happens to solar power when batteries are full in our

comprehensive guide. Learn about energy optimization, overflow ...



What Happens to Solar Power When Batteries Are Full

The charge controller pushes current into batteries and/or inverter, depending on inverter load. If batteries are full, charge controller will only supply what inverter is demanding.

What does it mean when a photovoltaic inverter is fully ...

How does a photovoltaic inverter work? Photovoltaic solar panels convert sunlight into electricity, but this is direct current, unsuitable for domestic use. The photovoltaic inverter ...



How to Know If Inverter Battery Fully Charged?

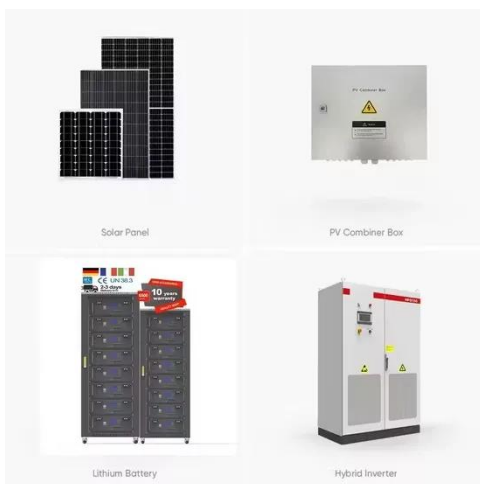
There are also inverter battery low and overload indicators. Some inverters

incorporate sound. When the battery is fully charged, a ...



What to Do When Inverter Battery is Fully ...

As inverter batteries store solar energy, it is crucial to understand when they are completely charged to prevent overcharging. In ...



What Happens to Solar Power When Batteries are Full: A ...

Explore what happens to solar power when batteries are full in our comprehensive guide. Learn about energy optimization, overflow solutions, and more.

Photovoltaic Inverter Fully Loaded Maximizing Solar Energy ...

Optimizing a photovoltaic inverter fully loaded operation requires balancing

technical precision with real-world adaptability. From thermal management breakthroughs to AI-enhanced load ...



Contact Us

For catalog requests, pricing, or partnerships, please contact:

BLINK SOLAR

Phone: +48-22-555-9876

Email: info@blinkartdesign.pl

Website: <https://www.blinkartdesign.pl>

Scan QR code to visit our website:

