

BLINK SOLAR

Solar container battery and solar module in parallel



Overview

Why do solar batteries need parallel connections?

Parallel connections allow for a more even discharge of batteries, which can enhance the lifespan of each unit by preventing over-discharge in any single battery. Understanding these elements of solar batteries equips you with the knowledge to optimize your solar energy system effectively.

How to connect lithium solar batteries in parallel?

Connecting Lithium Solar Batteries in Parallel: When connecting batteries in parallel, the positive terminals are connected together, and the negative terminals are connected together. The ampere-hour capacity of the individual batteries adds up, while the total voltage remains the same as the individual batteries.

How do I wire solar batteries in parallel?

To wire solar batteries in parallel, connect the positive terminals of all batteries together and do the same with the negative terminals. Ensure that all batteries share the same voltage rating. Following this configuration allows the system to benefit from increased capacity.

Can you connect a battery to a solar panel?

You can connect batteries in series or parallel, with each option offering different tradeoffs. Much like connecting solar panels, it is a matter of what you are solving for, increasing the voltage or current. With batteries, though, there are a few basics you need to keep in mind before you proceed: Batteries use higher currents.

Solar container battery and solar module in parallel



Connecting Solar Batteries in Series and Parallel

Battery Matching: Always use batteries of the same voltage, capacity, and age when connecting in series or parallel. Mismatched ...

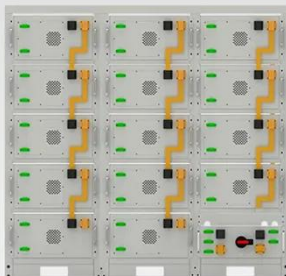
12V Solar Batteries in Parallel-Ritar International Group Limited

This helps to optimize the performance and lifespan of the battery bank, ensuring that all batteries operate efficiently and last longer. Despite the challenges, connecting 12V ...



How to Connect Solar Batteries in Parallel for ...

Unlock the full potential of your solar energy system by learning how to connect solar batteries in parallel. This comprehensive ...



Battery String-S224

- 1C Charge/Discharge
- Easy configuration and maintenance
- Power supply can be single battery string or parallel battery strings

How to Wire Solar Panel & Batteries in Parallel

The 12V system is the most common solar panel wiring configuration used with batteries for small load residential application. Typically, to achieve a 12V DC to 120V/230V ...



 LFP 280Ah C&I



How to connect solar batteries in parallel

To effectively connect solar batteries in parallel and ensure optimal performance, it's essential to understand the fundamental ...

Lithium Solar Batteries Series vs Parallel Connection

Lithium solar batteries are essential components of solar energy systems, providing reliable energy storage for various applications. Understanding how to connect these ...



How to Connect Solar Batteries in Parallel for Maximum ...

Unlock the full potential of your solar energy system by learning how to



connect solar batteries in parallel. This comprehensive guide explores the benefits of increased ...

How to Wire Solar Panel & Batteries in ...

12V Solar Panel and Battery Parallel Wiring for Power Systems A 12V connection is the most prevalent setup for wiring solar panels to batteries. ...



TAX FREE 

ENERGY STORAGE SYSTEM

Product Model
HJ-ESS-215A(100KW/215KWh)
HJ-ESS-115A(50KW/115KWh)

Dimensions
1600*1280*2200mm
1600*1200*2000mm

Rated Battery Capacity
215KWH/115KWH

Battery Cooling Method
Air Cooled/Liquid Cooled



Parallel Connection of Batteries in DIY Solar Power

Conclusion Parallel connection of batteries in a DIY solar power system is a practical way to expand energy storage capacity. By following key guidelines--matching ...

Connecting Solar Batteries in Series and Parallel

Battery Matching: Always use batteries of the same voltage, capacity, and age

when connecting in series or parallel. Mismatched batteries can lead to inefficient charging or ...



Lithium Solar Batteries Series vs Parallel ...

Lithium solar batteries are essential components of solar energy systems, providing reliable energy storage for various ...

Parallel Connection of Batteries in DIY Solar ...

Conclusion Parallel connection of batteries in a DIY solar power system is a practical way to expand energy storage capacity. By ...



- ✓ IP65/IP55 OUTDOOR CABINET
- ✓ WATERPROOF OUTDOOR CABINET
- ✓ 42U/27U
- ✓ OUTDOOR BATTERY CABINET

How to connect solar batteries in parallel , NenPower

To effectively connect solar batteries in parallel and ensure optimal

performance, it's essential to understand the fundamental concepts and best practices involved.



Solar Battery Series & Parallel: Optimal Setup Guide

Key Takeaways Straightforward guide to connecting solar batteries, the tradeoffs involved and optimising for specific cases. Sometimes a single battery is not enough for your ...



How to Wire Solar Panel & Batteries in ...

The 12V system is the most common solar panel wiring configuration used with batteries for small load residential application. ...

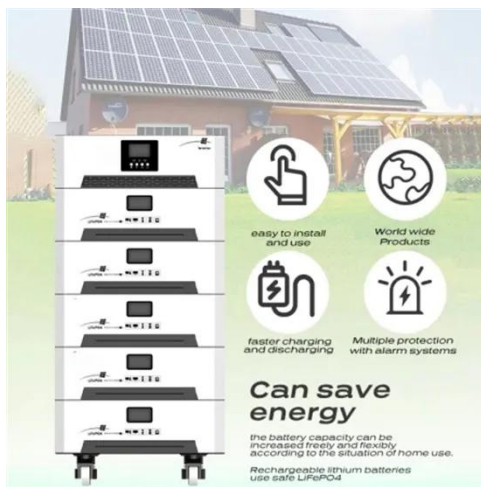


**200kWh
Battery Cluster**

How to Wire Solar Panel & Batteries in Parallel for 12V System

12V Solar Panel and Battery Parallel Wiring for Power Systems A 12V

connection is the most prevalent setup for wiring solar panels to batteries. Typically, to convert this 12VDC power into ...



How To Connect Solar Batteries In Series And Parallel

This section explains the different types of batteries used in wind and solar power systems, and how to wire them together in series and parallel. To achieve a 12VDC to ...

Contact Us

For catalog requests, pricing, or partnerships, please contact:

BLINK SOLAR

Phone: +48-22-555-9876

Email: info@blinkartdesign.pl

Website: <https://www.blinkartdesign.pl>

Scan QR code to visit our website:

