

BLINK SOLAR

Solar Wind and Solar Energy Storage Power Station



Overview

Where is storage located in a power plant?

Storage can be located at a power plant, as a stand-alone resource on the transmission system, on the distribution system and at a customer's premise behind the meter. Do wind and solar need storage?

All power systems need flexibility, and this need increases with increased levels of wind and solar.

How do solar and wind power systems work?

Solar and wind facilities use the energy stored in batteries to reduce power fluctuations and increase reliability to deliver on-demand power. Battery storage systems bank excess energy when demand is low and release it when demand is high, to ensure a steady supply of energy to millions of homes and businesses.

What is a battery energy storage system (BESS)?

To overcome these challenges, battery energy storage systems (BESS) have become important means to complement wind and solar power generation and enhance the stability of the power system.

How do energy devices and energy storage systems work?

Each energy device and energy storage system coordinates to meet the electric and heat load of the system and improve the renewable energy consumption efficiency of the system. The system operating costs in different cases are shown in Table 5.

Solar Wind and Solar Energy Storage Power Station



Energy storage system based on hybrid wind and ...

A 6 kWp solar-wind hybrid system installed on the roof of an educational building is studied and optimized using HOMER (Hybrid Optimization of Multiple Energy Resources) ...

Wind and Solar Energy Storage , Battery Council International

Solar and wind facilities use the energy stored in lead batteries to reduce power fluctuations and increase reliability to deliver on-demand power.



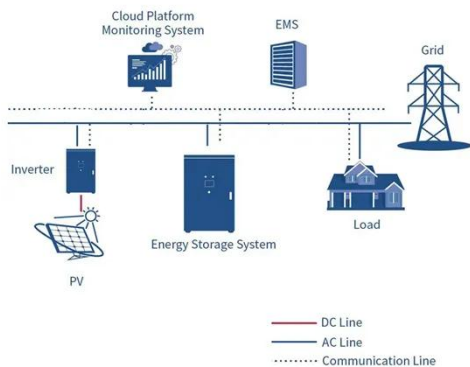
Optimization Method for Energy Storage System in Wind-solar-storage ...

The volatility and randomness of new energy power generation such as wind and solar will inevitably lead to fluctuations and unpredictability of grid-connected power. By ...



Energy Storage Configuration of Energy Collection Station Based on Wind

As one of the important ways of sustainable development, renewable energy has gradually entered the public vision [1]. With the development of research and application, ...



Capacity Configuration and Operation Method of Wind-Solar

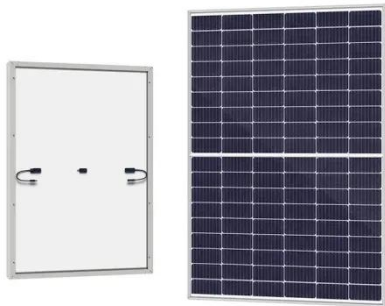
Finally, through simulation, the paper derives the configuration and operational status of various energy sources, as well as power generation schemes under different resource endowments. ...

STORAGE FOR POWER SYSTEMS

STORAGE FOR POWER SYSTEMS Growing levels of wind and solar power increase the need for flexibility and grid services across different time scales in the power ...



Robust Optimization of Large-Scale Wind-Solar Storage Renewable Energy



The results show that the proposed method can effectively coordinate the multi-energy complementary and coordinated operation of multiple hybrid energy storage, and the ...

Capacity planning for wind, solar, thermal and energy storage in power

As the development of new hybrid power generation systems (HPGS) integrating wind, solar, and energy storage progresses, a significant challenge arises: how to incorporate ...



Anhui Fuyang South solar-and-wind-plus-storage base project

The project comprises a 650 MW solar power station and a 550 MW wind farm. It will also build an energy storage power station to enhance power grid stability and overall ...

Wind Solar Power Energy Storage Systems, Solar and Wind Energy ...

As global demand for renewable energy surges, wind and solar power have become pivotal in the transition away from fossil fuels. The Wind-Solar-Energy Storage system ...



Contact Us

For catalog requests, pricing, or partnerships, please contact:

BLINK SOLAR

Phone: +48-22-555-9876

Email: info@blinkartdesign.pl

Website: <https://www.blinkartdesign.pl>

Scan QR code to visit our website:

