

BLINK SOLAR

Single-phase 220v inverter



Overview

What is a single phase inverter?

A single-phase inverter, is an inverter with a single-phase 220V input voltage and a three-phase 380V or single-phase 220V output voltage. The single-phase output inverter is a power control device used to convert single-phase AC power into three-phase AC power to meet the driving needs of certain three-phase motors.

What is a single phase output frequency inverter?

The single phase output frequency drives are widely used to control the speed of motors in various equipment such as pumps, ventilation systems, elevators, machine tool drives, etc. 0.75kW single phase output frequency inverter for sale, 1-phase input to 0~input voltage 1-phase output at 220V/230V/240V.

What is the operating temperature of a single phase inverter?

With humidity 90%RH, single phase inverter operating temperature (-10°C, 40°C). The single phase output frequency drives are widely used to control the speed of motors in various equipment such as pumps, ventilation systems, elevators, machine tool drives, etc.

What is a three phase inverter?

It is nothing but three single phase inverters put across the same DC source. The pole voltages in a three phase inverter are equal to the pole voltages in single phase half bridge inverter. The two types of inverters above have two modes of conduction – 180° mode of conduction and 120° mode of conduction.

Single-phase 220v inverter



Single Phase 220V Frequency Inverter, 1HP VFD Inverter

Single Phase 220V Frequency Inverter, 1HP VFD Inverter, Find Details and Price about Vector Control Inverter VFD from Single Phase 220V Frequency Inverter, 1HP VFD ...

China wholesale 220v Single Phase Inverter

Using Digital Technology Thinkpower PV on grid inverter using America's TI's digital control chip, the same chip as the 2nd generation of world well-known brand SMA, so in face of ...

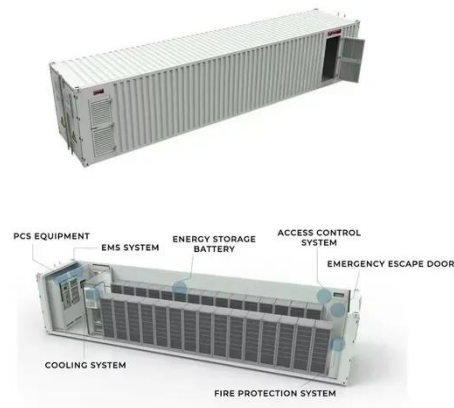


DOLIN DLVGF700 INVERTER - SINGLE PHASE 220V

Inverter is an electronic device that converts direct current (DC) or alternating current (AC) into an adjustable AC output with controllable frequency and voltage. Its main ...

Single phase frequency inverter of 220v, 230v, 240v

Single phase frequency inverter of 220v, 230v, 240v Overview This single phase frequency inverter is designed in a economical version with the power from 0.4kW to 2.2kW in 220V AC, ...



ESS

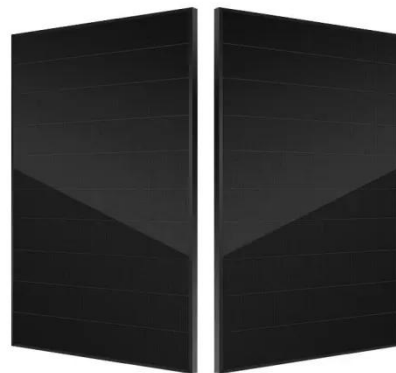


Single Phase Output Inverter

0.75kW single phase output frequency inverter for sale, 1-phase input to 0~input voltage 1-phase output at 220V/230V/240V. Rated current 7A, input voltage single phase AC 220 ± 15%, and ...

220V Single Phase Inverter

A 220V single phase inverter is an essential device designed to convert direct current (DC) power into alternating current (AC) power, making it compatible with most ...



220V Single Phase Inverter

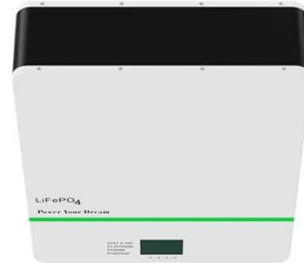
A 220V single phase inverter is an essential device designed to convert direct current (DC) power into



alternating current (AC) power, making it compatible with most household appliances and ...

Single-phase Input 220V 50 60Hz 2.2kW 4kVA White VFD ...

As one of the well-known single-phase input 220v 50 60hz 2.2kw 4kva white vfd inverter manufacturers and suppliers in China, SOYAN is here waiting for you to buy or ...



Single-phase Input 220V 50 60Hz 2.2kW 4kVA White VFD Inverter

As one of the well-known single-phase input 220v 50 60hz 2.2kw 4kva white vfd inverter manufacturers and suppliers in China, SOYAN is here waiting for you to buy or ...

Contact Us

For catalog requests, pricing, or partnerships, please contact:

BLINK SOLAR

Phone: +48-22-555-9876

Email: info@blinkartdesign.pl

Website: <https://www.blinkartdesign.pl>

Scan QR code to visit our website:

