

**BLINK SOLAR**

# **Koten safety breaker factory in Toronto**



## Overview

---

Who is KOTEN Enterprises?

KOTEN ENTERPRISES COMPANY, INCORPORATED was established in 1987 as a trading company. Expanded our operations as an importer, exporter, distributor, and wholesaler in 1997.

Where is KOTEN based?

KOTEN's main facility and head office is located at 439 Jui-Kuang Road., Taipei Taiwan and our Wholesaler's office is at 218 Lucban St., Pasay City Philippines. The panel board manufacturing plant and warehouse facility is strategically located at No. 6 LBICA Compound Malinis St., Valenzuela City.

Where is KOTEN panel board manufacturing company located?

Since quality is our main objective, we have decided to establish our own panel board manufacturing company in the year 2000 for us to be able to meet the demands of our growing clients. KOTEN's main facility and head office is located at 439 Jui-Kuang Road., Taipei Taiwan and our Wholesaler's office is at 218 Lucban St., Pasay City Philippines.

What is KSB-S safety breaker?

KSB-S Safety Breaker is a MCB or MCCB that is enclosed in a flame-retardant, impact-resistant plastic enclosure. It is used for indoor applications and is applicable for RCBO, plug-in, and bolt-on type circuit breakers. It is also optional with a socket outlet that has a rated current of 50A. Single Pole 2 way switch varies from 1 to 4 gangs.

## Koten safety breaker factory in Toronto

---



### Products

We are one of the leading manufacturers and distributors of electrical products and components. We put a premium on products, systems, and services with an efficient nationwide distribution.

### Koten

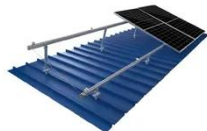
Mirola Hardware offers Koten electrical products, including universal outlets and safety breakers, suitable for various industrial and construction needs.



TILE ROOF SOLAR MOUNTING SYATEM



STANDING SEAM ROOF SYATEM



ADJUSTABLE TILT FLAT ROOF SYATEM



TRIANGLE FLAT ROOF SYATEM



### KOTEN ENTERPRISES COMPANY, INCORPORATED

Koten Enterprises provides electrical products and services, including breakers, switches, panelboards, LED lights, water heaters, and electrical design and installation.

## KSB-S

KSB-S Safety Breaker is a MCB or MCCB that is enclosed in a flame-retardant, impact-resistant plastic enclosure. It is used for indoor applications and is applicable for RCBO, plug-in, and ...



## KOTEN Breakers and Panel Boards

Kaizen Philippines Kotem Circuit Breaker 2Pole Safety Breaker KSB-S with Outlet ?710.00 In stock (500 units)

## Kotem Enterprises Co., Inc/Safety Breakers

Safety Breakers KSB 2 Pole (Kotem Safety Breaker) Bolt-On type circuit breaker 10 KAIC ABS Plastic Enclosures AVAILABLE:



## Kotem Enterprises Co., Inc/ABOUT US

As the pioneer manufacturer of Safety Breaker: We have made various process innovations from the ordinary circuit

### Lithium battery parameters

Product capacity: 100Ah

Product size: 135\*197\*35mm

Product weight: 1.82kg

Product voltage: 3.2V

internal resistance: within 0.5



breaker with metal enclosures to the new generation of Safety Breakers ...

## KOTEN SAFETY BREAKER W/ OUTLET 2P (KSB ...

APPLICATION Protects the electrical circuit from damage caused by overload electricity or short circuit. Once it detects a problem it ...



## Koten Enterprises Co., Inc/Safety Breakers

Safety Breakers KSB 2 Pole (Koten Safety Breaker) Bolt-On type circuit breaker 10 KAIC ABS Plastic Enclosures AVAILABLE:

## KSB-S

KSB-S Safety Breaker is a MCB or MCCB that is enclosed in a flame-retardant, impact-resistant plastic enclosure. It is

used for indoor ...



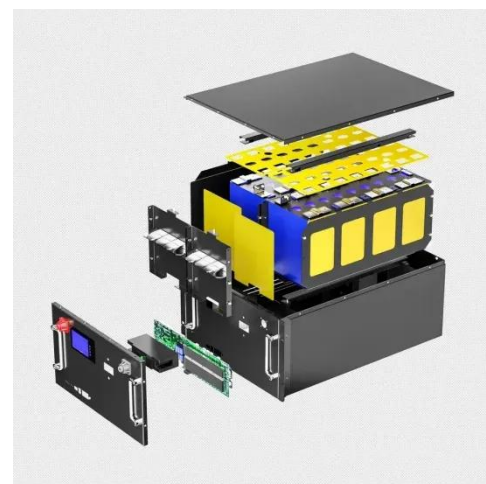
### Koten safety breaker factory in canada

Koten safety breaker factory in canada items supplier in China, we support our buyers with ideal high quality products and high level service coming the specialist manufacturer in this ...



### KOTEN SAFETY BREAKER W/ OUTLET 2P (KSB-S) - Buildwell ...

APPLICATION Protects the electrical circuit from damage caused by overload electricity or short circuit. Once it detects a problem it automatically trips and cuts off the power. Dimension: L x ...



## Contact Us

For catalog requests, pricing, or partnerships, please contact:

**BLINK SOLAR**

Phone: +48-22-555-9876

Email: [info@blinkartdesign.pl](mailto:info@blinkartdesign.pl)

Website: <https://www.blinkartdesign.pl>

*Scan QR code to visit our website:*

