

BLINK SOLAR

Inspection batch of wind power equipment for solar container communication stations



Overview

Do wind turbines need a commissioning inspection?

Operation and maintenance of wind turbines is costly. One of the approaches to reduce O&M costs is to carry out a full Commissioning Inspection followed by regular In-Service Inspections to detect failures of critical components as early as possible.

Do wind turbines need in-service inspections?

With the increasing number of installed wind turbines and major failures of critical components, the necessity of In-Service Inspections cannot be neglected.

What services do we offer for wind turbines?

We offer comprehensive quality inspection services for wind turbines and their components, starting from fabrication and loading, all the way to commissioning. Our technical experts follows a rigorous checklist to identify any defects or issues that could compromise the quality and safety of the materials.

What is wind turbine inspection?

Wind turbine inspection falls under one of two categories: Inspection in service to ensure continuity of operation. Inspection during the manufacturing stages for wind turbines need to meet the challenges posed by working with such large structures, while still meeting productivity, financial and design requirements.

Inspection batch of wind power equipment for solar container comm



Inspection batch of wind power equipment for ...

Inspection batch of wind power equipment for communication base stations Overview Can wind energy be used to power mobile phone base stations? Worldwide ...

Wind Turbine Inspection Solutions

TWI has been working to innovate solutions for the inspection of both onshore and offshore wind turbines for several years. Uniting non-destructive testing and robotics, we have created ...



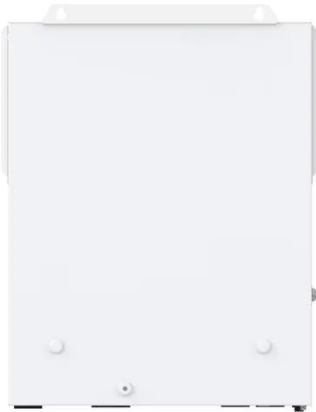
WIND INSPECTION AND TESTING CHECKLISTS

Dhaka communication base station wind power equipment installation The objective of these guidelines is to facilitate the development of wind power projects in an efficient, cost effective ...

Communication solution for wind power testing system

However, as the amount of data required for wind and solar power testing, the number of sensors, and the CAN bus communication distance increase, numerous issues have emerged during

...



Complete Solar & Wind Turbine Site Inspection Guide , Free ...

Comprehensive inspection guide covering battery systems, solar panels, wind turbines, equipment boards, cameras, security, weather stations, and infrastructure

Wind Turbines and Solar PV Inspection

Kiwa offers inspection services for wind turbines and photovoltaic systems that guarantee the efficiency and safety of assets, offering audits, certifications and continuous monitoring.



Three Dimensional Fully Autonomous Inspection Method for Wind Power

Download Citation , On , Ying Zhou and others published Three Dimensional Fully Autonomous Inspection Method for Wind Power Employing Unmanned Aerial Vehicle Based ...



WIND TURBINE INSPECTION SOLUTIONS

Battery standards for wind power in Jerusalem communication base stations
The paper proposes a novel planning approach for optimal sizing of standalone photovoltaic-wind-diesel-battery ...

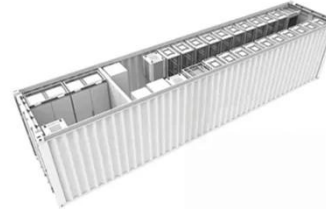


Research on refined UAV inspection method of wind/solar power stations

More and more research is focusing on the unmanned aerial vehicle (UAV) inspection of onshore wind/solar power stations; however, how to balance the contradiction ...

Reliable Renewable Energy Equipment Inspection-QCC INSPECTION

Overview Renewable energy equipment inspection, including solar panels, wind turbines, inverters, and battery storage systems, is essential for sustainable power generation ...



Preventive Maintenance and Strategies for Automatic Weather Stations

automatic weather stations can operate efficiently under various weather conditions, while also extending their lifespan. This will provide reliable data support for ...

Guidelines for Automatic Weather Stations at Power Plants

The Central Electricity Authority (CEA) has released detailed guidelines for the installation and operation of Automatic Weather Stations (AWS) at solar and wind power ...



Wind Turbine Inspection Services and Quality Control



We provide professional wind turbine inspection and quality control services to ensure your project meets safety standards. Minimise risk and ensure compliance today.

Commissioning and In-Service Inspections

A minor failure of a critical component of the wind turbine can cause undesirable down-time and loss of revenue. Operation and maintenance of wind turbines is costly. One of ...



Wind Inspection and Testing Checklists



IEC 61400-25- Communications for monitoring and control of wind power plants
IEC 61010 - Safety requirements for electrical equipment for measurement, control and

Contact Us

For catalog requests, pricing, or partnerships, please contact:

BLINK SOLAR

Phone: +48-22-555-9876

Email: info@blinkartdesign.pl

Website: <https://www.blinkartdesign.pl>

Scan QR code to visit our website:

