

BLINK SOLAR

How many watts of solar energy per square meter in summer



Overview

What is solar panel watts per square meter (W/M)?

Solar panel watts per square meter (W/m) measures the power output of a solar panel based on its size. Compare solar panels to see which generates most electricity per square meter. A higher W/m value means a solar panel produces more power from a given area. This can help you determine how many solar panels you need for your energy needs.

How much power does the Sun have per square metre?

The power of the Sun at the Earth, per square metre is called the solar constant and is approximately 1370 watts per square metre (W/m²). The solar constant actually varies by +/-3% because of the Earth's slightly elliptical orbit around the Sun.

How much solar energy is received per square meter?

The amount of solar intensity received by the solar panels is measured in terms of square per meter. The sunlight received per square meter is termed solar irradiance. As per the recent measurements done by NASA, the average intensity of solar energy that reaches the top atmosphere is about 1,360 watts per square meter.

How much solar energy does Earth have?

At Earth's average distance from the Sun (about 150 million kilometers), the average intensity of solar energy reaching the top of the atmosphere directly facing the Sun is about 1,360 watts per square meter, according to measurements made by the most recent NASA satellite missions. This amount of power is known as the total solar irradiance.

How many watts of solar energy per square meter in summer



How to Calculate Solar Power per Square Meter

Solar power per square meter refers to the amount of solar energy that can be harnessed by a solar panel over a specific area, typically expressed in watts per square meter ...

Solar Panel Output Per Square Meter

Discover how much electricity solar panels generate per square meter, explore efficiency factors, technology comparisons, and ...



Solar Panel Watts Per Square Meter Explained

Winter months may see decreased output compared to summer months. Understanding these variations is essential for estimating system capacity and expected watts per square meter ...



Solar Energy Generation Per Square Metre: A ...

With the rising demand for renewable energy, solar panels for home have become a popular choice for homeowners looking to reduce ...



SWS

For the purposes of solar energy capture, we normally talk about the amount of power in sunlight passing through a single square metre face-on to the Sun, at the Earth's distance ...



Solar Energy Per Square Meter: How Much Power Can You ...

As the world increasingly shifts towards renewable energy, it's essential for homeowners and businesses to understand solar energy production comprehensively. This ...



How to Calculate Solar Power per Square Meter

Solar power per square meter refers to the amount of solar energy that can be

harnessed by a solar panel over a specific area, ...



Solar Power per Square Meter Calculator

Solar Panel Output Calculator
 Solar Panels Kwh Calculator
 Solar Panel Area Per Kw
 Wattage is the output of solar panel that is calculated by multiplying the volts by amps. Here, the amount of the force of the electricity is represented by volts. The aggregate amount of energy used is expressed in amps (amperes). Output ratings on most solar panels range between 250 watts to 400 watts. See more on energy theory consumer energy center



Solar Energy Per Square Meter: How Much Power Can You ...

As the world increasingly shifts towards renewable energy, it's essential for homeowners and businesses to understand solar energy production comprehensively. This ...



Solar Panel Output Per Square Meter

Discover how much electricity solar panels generate per square meter, explore efficiency factors, technology comparisons, and future innovations in photovoltaic energy.

Climate and Earth's Energy Budget

At Earth's average distance from the Sun (about 150 million kilometers), the average intensity of solar energy reaching the top of the atmosphere directly facing the Sun is ...



Solar Energy Generation Per Square Metre: A Complete Guide

With the rising demand for renewable energy, solar panels for home have become a popular choice for homeowners looking to reduce electricity bills and contribute to a ...



How many watts of solar energy is suitable ...

High-efficiency solar panels produce more energy per square foot, allowing

homeowners with limited roof space to still invest in a robust ...

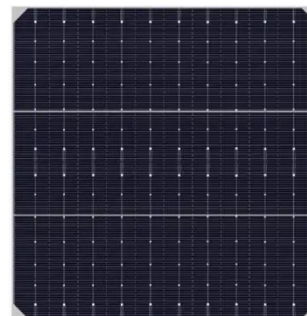


Daily Solar Irradiance Calculator

A Daily Solar Irradiance Calculator is a tool used to estimate the amount of solar energy received per square meter of a given location in a single day. This calculation helps in ...

Daily Solar Irradiance Calculator

A Daily Solar Irradiance Calculator is a tool used to estimate the amount of solar energy received per square meter of a given location ...



Solar Panel Watts Per Square Meter Explained

Winter months may see decreased output compared to summer months.

Understanding these variations is essential for estimating system capacity

...



How many watts of solar energy is suitable for home use in summer

High-efficiency solar panels produce more energy per square foot, allowing homeowners with limited roof space to still invest in a robust solar solution. For instance, ...



Solar Power per Square Meter Calculator

Solar Power per Square Meter Calculator: It's used to calculate the amount of solar intensity received by the solar panels.



SWS

For the purposes of solar energy capture, we normally talk about the amount of power in sunlight passing

through a single square metre ...



Contact Us

For catalog requests, pricing, or partnerships, please contact:

BLINK SOLAR

Phone: +48-22-555-9876

Email: info@blinkartdesign.pl

Website: <https://www.blinkartdesign.pl>

Scan QR code to visit our website:

