



## Overview

---

Which solar panel series n-type Topcon bifacial 590w?

EAPRO Global Ltd Solar Panel Series N-Type TOPCon Bifacial 590W. Detailed profile including pictures, certification details and manufacturer PDF.

What is a rs585-605s9-120 solar panel?

The RS585~605S9-120 solar panel by Runda PV is a high-performance [.] G12 Hieff Twin SP585-605-120 is a solar panel manufactured by Sunpro [.] Introducing the JST182\*182-M-78-MH- (580-605)W by Just Solar, a [.]

What is a Topcon 580 Wp solar panel?

Experience unmatched solar performance with the L'LIOS TOPCon 580 Wp Solar Panel. Powered by advanced N-Type TOPCon technology, it ensures superior energy efficiency, zero LID loss, and robust durability for sustainable energy solutions. Anti-Reflective (AR) Coated Glass for Enhanced Power

## EK590 solar panel specifications

---



### What are the standard solar panel ...

1. SOLAR PANEL EFFICIENCY Solar panel efficiency represents a monumental aspect when evaluating the performance and ...

---

## How to Read a Solar Panel Technical Datasheet

Unlock the secrets of solar panel datasheets with our comprehensive guide! Learn how to decipher specifications, optimize ...



---

### JKM560-580N-72HL4-BDV-F6-EN

PID Resistance Excellent Anti-PID performance guarantee via optimized mass-production process and materials control.

## Solar Panel Specification

Standard Testing Conditions Before we deep-dive into solar panels specifications, it's important to understand that all of these panels are ...



### **EKOTEK ET-590W MONO**

EKOTEK SOLAR PANEL EKO-144 N-type (182mm Cell) - 570-590 Watt (Monofacial Module) Industry-leading Warranty based on nominal power ...

### **Alpex Solar , Nikko N-Type Bifacial TOPCon 560-590W , Solar Panel**

Alpex Solar Limited Solar Panel Series Nikko N-Type Bifacial TOPCon 560-590W. Detailed profile including pictures, certification details and manufacturer PDF



### **Decoding Solar Panel Specifications: A Guide ...**

Introduction: Solar panels are at the heart of any solar energy system, and

understanding their specifications is crucial for homeowners ...



**2MW / 5MWh  
Customizable**

### PE-144 HC TOPCon\_Bifacial Dual Glass 560-590w

The specification and key features contained in this datasheet may deviate slightly from our actual products due to the on-going innovation & product enhancement, Premier ...



**TAX FREE** 

**ENERGY STORAGE SYSTEM**

**Product Model**  
HJ-ESS-215A(100KW/215KWh)  
HJ-ESS-115A(50KW 115KWh)

**Dimensions**  
1600\*1280\*2200mm  
1600\*1200\*2000mm

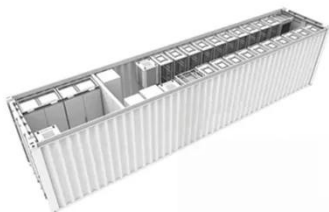
**Rated Battery Capacity**  
215KWH/115KWH

**Battery Cooling Method**  
Air Cooled/Liquid Cooled



  
**TAX FREE**

**1-3MWh**  
**BESS**



### What's in the datasheet: A guide to reading ...

Understanding of how to read solar panel specs is essential for making the right choice for your system. This guide focuses on the key ...

### How To Understand And Compare Solar ...

The specifications outlined in a solar panel's datasheet provide insights into

its expected performance under specific conditions. When shopping for ...



### How to understand and compare solar panel ...

In solar panel specifications you can read cells type/vendor, snow/ wind load, temperature coefficient etc.

### Rayzon Solar , L'lios TOPCon Modules 590WP

Explore Rayzon Solar's cutting-edge L'LIOS Topcon modules for superior efficiency, quality, and safety, setting new standards in solar technology.



### 590 Watt Solar panels for sale , Prices, ...

590 Watt Solar panels' range of prices, dimensions, sizes, voltage output,

## specifications datasheets



---

**590 Watt Solar panels for sale ,  
Prices, dimensions, weight, ...**

590 Watt Solar panels' range of prices,  
dimensions, sizes, voltage output,  
specifications datasheets

**PV module specifications and  
performance parameters**

The nameplate ratings on photovoltaic  
(PV) panels and modules summarize  
safety, performance, and durability ...

---

**Premier Energies , N-Type 144  
TOPCon cell 560**

Premier Energies Limited Solar Panel  
Series N-Type 144 TOPCon cell 560 - 590

W. Detailed profile including pictures, certification details and manufacturer PDF



### **EAPRO , N-Type TOPCon Bifacial 590W , Solar Panel Datasheet , ENF Panel**

EAPRO Global Ltd Solar Panel Series N-Type TOPCon Bifacial 590W. Detailed profile including pictures, certification details and manufacturer PDF

### **HY-DH144N8 570-590W B30**

Mechanical Parameters Solar Cell Mono N-Type 182mm No. of Cells Dimensions 144 (6 × 24)



- LIQUID/AIR COOLING
- ON GRID/HYBRID
- PROTECTION IP54/IP55
- BATTERY /6000 CYCLES

### **Premier Energies , N-Type 144 TOPCon cell ...**

Premier Energies Limited Solar Panel Series N-Type 144 TOPCon cell 560 - 590

W. Detailed profile including pictures, certification details and ...



---

### **AE\_CMD-144\_570W-590W\_Ver24.9.1**

The specifications and characteristics contained in this datasheet may deviate slightly from our actual products due to the product developments and uncertainty of ...



---

### **590 Photovoltaic panel specifications and dimensions**

590 Photovoltaic panel specifications and dimensions The JA Solar JAM72D40-590/LB-ITS is a 590W n-type Double Glass Bifacial Solar Panel with a silver frame. Part of the Deep Blue 4.0 ...



---

### **Rayzon Solar , L'lios TOPCon Modules 590WP**

Explore Rayzon Solar's cutting-edge L'LIOS Topcon modules for superior ...



---

### **EKOTEK ET-590W MONO**

EKOTEK SOLAR PANEL EKO-144 N-type (182mm Cell) - 570-590 Watt (Monofacial Module) Industry-leading Warranty based on nominal power 0.4% Annual Degradation over 30 Years ...



---

### **GT590W-120M bifacial topcon 590w solar module ...**

GT590W-120M bifacial topcon 590w solar module monocrystalline is a high-performance, and reliable choice to maximize solar energy production.



---

### **Solar Panel Specifications for Dummies**

You've gone through the basics of solar panels and their specifications - the

monocrystalline and polycrystalline  
panels, standard ...



---

## Contact Us

---

For catalog requests, pricing, or partnerships, please contact:

### **BLINK SOLAR**

Phone: +48-22-555-9876

Email: [info@blinkartdesign.pl](mailto:info@blinkartdesign.pl)

Website: <https://www.blinkartdesign.pl>

*Scan QR code to visit our website:*

