

BLINK SOLAR

Disable the base station and still be able to communicate



Overview

Should a removable base station be activated or deactivated?

For wireless communication networks (WCNs) with the removable base station (BS), activating the removable BS could improve the quality of service (QoS), while frequent activating and deactivating may incur huge costs.

Can I assign a handheld to a primary base station?

Yea, you must assign at least one Handheld to the primary base station. Now its ok. Thank you and BR. Was this reply helpful?

Yes No An Unexpected Error has occurred. Solved: I have 5 Poly Rove B4 Base stations and 41 Poly Rove 30 handhelds.

Do I need a voice service registered on a rove B4 base station?

You must have a voice service registered on only one of the Rove B4 base stations. The base station with the registered service acts as the primary base station. > source < Do you see the base stations you declared the master and the secondary in the Base Station Groups Status summary?

Can you see the DECT Chain?

.

Does a BS switch to standby mode if no data packet is transmitted?

If there is no data packet to be transmitted, BSs will switch to standby mode. However, for the removable BS, a prolonged standby period results in resource waste. Therefore, it is essential for managers to monitor the standby status of BSs. We also adopt probabilities to describe the standby situations of the two BSs.

Disable the base station and still be able to communicate



command and solution of RTKNAVI (Rover) and STRSVR (Base Station...

I'm not using these tools, but I'd assume you want to enable the RTCM3 messages out of the USB VCP of the Base C94-M8P, and suppress the UBX and NMEA output, and ...

Activation and sleep control of the removable base station ...

For wireless communication networks (WCNs) with the removable base station (BS), activating the removable BS could improve the quality of service (QoS), while frequent ...



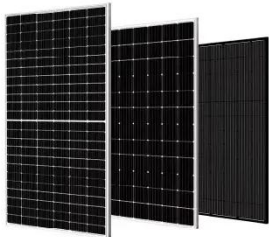
Fix Loss of Wireless Communications

Loss of Wireless Communications The key to any wireless system is the communication between the wireless transmitters and the base station. We use a bi-directional ...



?base station destroyed , SimpliSafe Support Home

Would the destruction of the base station by a burglar prevent the transmission of a triggered sensor signal to dispatch if done within the 30 second delay period? & nbsp;Just ...



power electronics

Which in turn means we wouldn't be able to receive calls. If more than one base station picks up the signal, it is possible to "triangulate" the phone - determining its rough ...

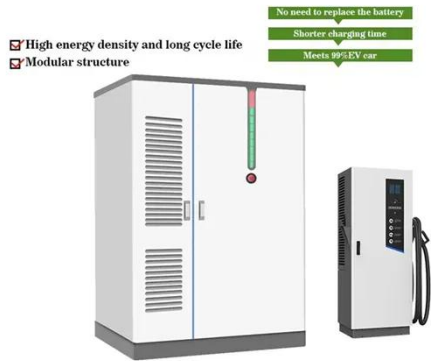
Problem to establish multicell environment with B4 base stations

Solved: I have 5 Poly Rove B4 Base stations and 41 Poly Rove 30 handhelds. I am trying to establish Multicell setup, because the basic requirement - 9145298



Be able to modify the wireless channels of a ...

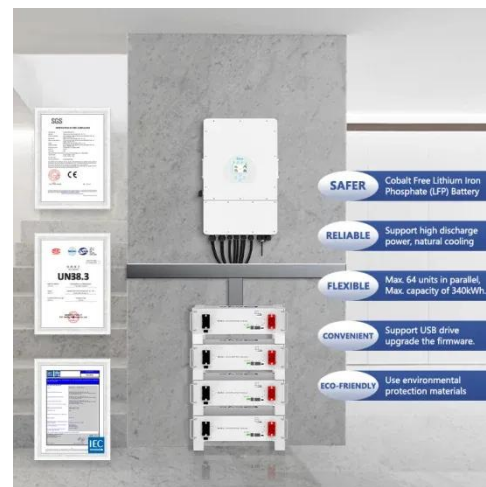
This is piggybacking an older Arlo Idea



request with more than 140 votes, that was closed. Summary of the idea: Allow users to adjust ...

legacy-station disable (Central AP)

After the legacy-station disable command is run, non-HT STAs supporting only 802.11a/b/g cannot access the wireless network. After the legacy-stationonly-dot11bdisable command is run, non ...



Be able to modify the wireless channels of a base



This is piggybacking an older Arlo Idea request with more than 140 votes, that was closed. Summary of the idea: Allow users to adjust the Wi-Fi Radios settings of the base ...

Contact Us

For catalog requests, pricing, or partnerships, please contact:

BLINK SOLAR

Phone: +48-22-555-9876

Email: info@blinkartdesign.pl

Website: <https://www.blinkartdesign.pl>

Scan QR code to visit our website:

