

**BLINK SOLAR**

# Data Center Foldable Container Hybrid



## Overview

---

What is a modular data center container?

IT containers based on the modular principle. Modular data centers in containers are the perfect, scalable solution – whether individually for SME, cloud and Edge applications, or as preconfigured data center containers. Growing data volumes and escalating requirements often lead to space problems in existing IT environments.

Are container solutions suitable for outdoor sitting a big data application?

Growing data volumes and escalating requirements often lead to space problems in existing IT environments. Container solutions suitable for outdoor sitting are one possible solution for this kind of Big data applications.

What is the AIDC prefabricated container solution?

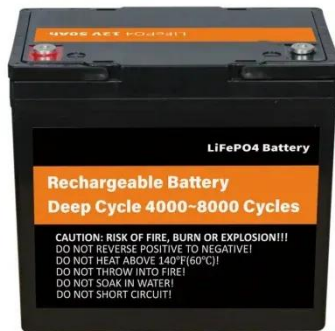
Called the AIDC Prefabricated Container Solution and launched at MWC Shanghai 2025, the container can support either 8kW air-cooled general computing cabinets, or 40kW liquid-cooled AI computing racks. It also supports "dual-mode computing in one box," which combines the two.

What is a 40kVA container-type data center?

Tokyo, Octo- Mitsubishi Heavy Industries, Ltd. (MHI) has developed a new 40kVA-class 12ft container-type data center with an immersion/air-cooled hybrid cooling system capable of simultaneously housing servers utilizing three types of cooling methods: immersion cooling (25kVA), air cooling (8kVA), and water cooling (8kVA).

## Data Center Foldable Container Hybrid

---



### MHI Introduces New Container-Type Data Center with ...

Mitsubishi Heavy Industries Tokyo, Octo-Mitsubishi Heavy Industries, Ltd. (MHI) has developed a new 40kVA-class 12ft container-type data center with an ...

### ZTE launches AI-focused prefabricated data center container

Called the AIDC Prefabricated Container Solution and launched at MWC Shanghai 2025, the container can support either 8kW air-cooled general computing cabinets, or 40kW ...



### Containerized Data Center

Containerized Data Center Quick deployment for edge computing applications in the IoT world In this IT intensive world with heavy data traffic, an edge datacentre acts as a caching and data ...



## ZTE unveils modular prefab AI data center container for ...

Chinese vendor ZTE has introduced a new prefabricated AI data center (AIDC) container solution, designed for rising demand for AI computing and rapid infrastructure ...

18650<sup>3.7V</sup>  
Li-ion  
RECHARGEABLE BATTERY  
**2000mAh**

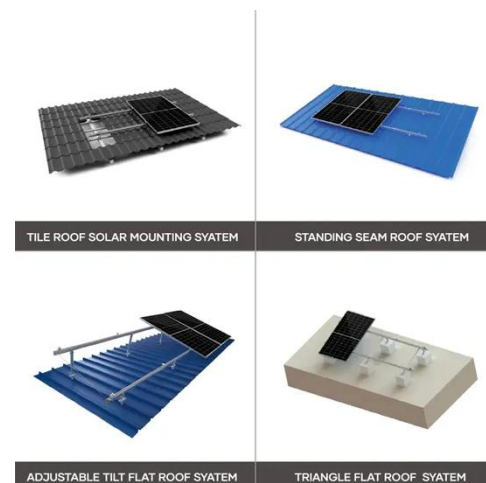


## ZTE Launches Modular Prefabricated AI Data Center Container

Shanghai, China, 3 July 2025 - ZTE Corporation(0763.HK / 000063.SZ), a global leading provider of integrated information and communication technology solutions, has launched AIDC ...

## ZTE's AIDC Prefabricated Container So

PRESS RELEASE: ZTE Corporation has launched AIDC Prefabricated Container Solution at MWC Shanghai 2025. With the explosive growth of 5G and AI, the construction of ...



## ZTE Launches Modular AI Data Center for Fast Deployment



ZTE unveils its AIDC prefabricated data center container, engineered for AI, HPC, and cloud workloads. Designed for rapid deployment, high efficiency, and sustainability, the ...

---

## Prefabricated Modular Data Center , One Module One DC

Explore Prefabricated Modular Data Center solutions with One Module One DC and Container Data Center designs, offering flexible, scalable, and efficient infrastructures for modern data ...



## FusionDC1000B Prefabricated Modular Data Center , Huawei

...

Huawei FusionDC1000B delivers a flexible, cost-efficient modular data center solution for small- and medium-sized data centers, perfect for enterprises, governments, and IDCs, ensuring fast ...

---

**Contact Us**

For catalog requests, pricing, or partnerships, please contact:

**BLINK SOLAR**

Phone: +48-22-555-9876

Email: [info@blinkartdesign.pl](mailto:info@blinkartdesign.pl)

Website: <https://www.blinkartdesign.pl>

*Scan QR code to visit our website:*

