

BLINK SOLAR

Correctly connect the inverter to the battery



Overview

How do you connect a battery to an inverter?

Connect the Cables: Attach the positive cable to the positive terminal of both the battery and the inverter. Repeat the process for the negative cable. **Double-Check the Connection:** Ensure all connections are secure and the polarity is correct. **Power On the System:** Turn on the inverter and test the connection to ensure it's working properly. 5.

What are inverter battery connections?

Inverter battery connections form the backbone of reliable power systems, ensuring efficient operation and safety. By following best practices and understanding the nuances of these connections, you can enhance system performance and longevity.

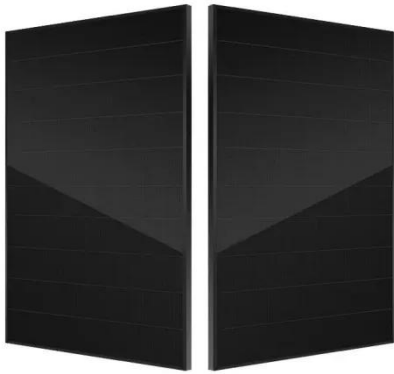
Do inverters and batteries need to match?

The inverter and batteries must match in terms of voltage, capacity, and power output. If you are using a 12V battery, then the input voltage of the inverter must match the battery voltage. If the specifications of the battery and the inverter do not match, the system will not operate stably and may even damage the equipment.

Do inverters need to be connected to batteries?

Connecting inverters to batteries is an important part of an off-grid power solution or backup power system, and the right connections ensure that the system runs efficiently.

Correctly connect the inverter to the battery



How to Safely Connect a Battery to an Inverter: A Step-by ...

Learn how to safely connect your batteries to your inverter with our guide. Avoid common wiring mistakes to optimize performance and extend system life.

How to connect a 24 Volt 220v Inverter to a battery?

Conclusion Connecting a 24 Volt 220v Inverter to a battery is a relatively straightforward process, but it requires careful attention to detail and adherence to safety precautions. By following the ...



How to Connect an Inverter to a Battery: Step ...

Learn how to safely and efficiently connect an inverter to a battery with our step-by-step guide. Includes brand-specific tips for Solis, ...

How to Hook Up a Power Inverter to a Battery

Permanent Inverter Connection to Battery What you'll need: Wire strippers Pliers Screwdriver Spanners/wrench Inverter Fuse/circuit breaker with cable and lugs 1. Mount Power Inverter in ...

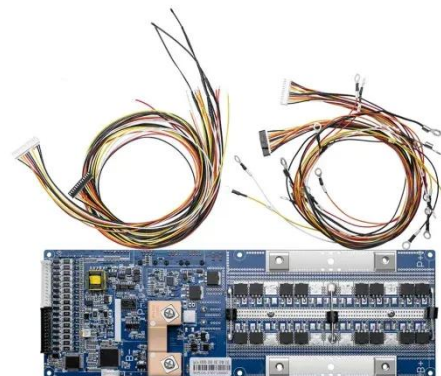


How to Connect Battery to Solar Inverter

Learn how to connect a battery to a solar inverter with our step-by-step guide. Discover tips for safe installation and explore iStore's reliable solar solutions.

How To Connect Inverter With Battery?

As a leading manufacturer and supplier of home lithium battery storage, we understand the importance of properly connecting your battery backup inverter to your battery ...



How to Wire Inverter to Battery - No Sparks, ...

How to wire an inverter to a battery? Connect the inverter's positive and

negative terminals to the battery, add a fuse on the positive ...



How to Wire Inverter to Battery - No Sparks, Just Power

How to wire an inverter to a battery? Connect the inverter's positive and negative terminals to the battery, add a fuse on the positive line, and double-check polarity. Key ...



How to Connect an Inverter to a Battery: Step-by-Step Guide

...

Learn how to safely and efficiently connect an inverter to a battery with our step-by-step guide. Includes brand-specific tips for Solis, Deye, Megarevo, SRNE, and more. Perfect ...



Inverter Battery Connection: Essential Tips For Safe And ...

Learn essential tips for safe and efficient

inverter battery connection. Discover step-by-step guides, wiring techniques, and troubleshooting tips to optimize your power backup system's ...



Contact Us

For catalog requests, pricing, or partnerships, please contact:

BLINK SOLAR

Phone: +48-22-555-9876

Email: info@blinkartdesign.pl

Website: <https://www.blinkartdesign.pl>

Scan QR code to visit our website:

