

## **BLINK SOLAR**

# **Can the battery be charged at the station**



## Overview

---

Can a battery overcharge a portable power station?

Constant charging can lead to overcharging for a portable power station with lithium battery, which might reduce the battery's lifespan and efficiency. Most models have systems to prevent overcharging, but it's best to disconnect once fully charged to maintain battery health.

Can You charge a portable power station while using it?

Yes, you can charge a portable power station while using it, a process known as pass-through charging. This feature allows you to simultaneously power devices and recharge the station, making it highly convenient for continuous use, although it may impact the charging efficiency and overall battery lifespan.

Should you charge a power station while driving?

Charge While Driving: To avoid draining the car battery, it's best to charge the power station while the vehicle is running. This ensures a continuous power supply without risking your vehicle's battery.

How do you charge a power station with a car?

Detailed instructions for charging your power station with a car are as follows:  
Connect to Power Station: Insert the car charging cable into the power station's charging input and the car's 12V outlet. Start Engine: Turn on your car's engine to start charging; this prevents draining the car's battery.

## Can the battery be charged at the station

---

### 5 Ways to Recharge a Portable Power Station



These giant removable batteries provide a mobile power source to quickly recharge your station. For example, a 300Wh battery ...

---

### How to Charge a Portable Power Station?

In this comprehensive guide, we will walk you through all you need to know about how to charge a portable power station.



48V 100Ah

---

### Can a Portable Power Station Be Charged and ...



That's because the battery is constantly being charged and discharged at once, which can result in more wear compared to a ...

## Should You Fully Charge a Newly Purchased ...

Should It Always Be Fully Charged? So, should the portable power station always be kept fully charged? The answer is no. Lithium-ion ...



## 4 Best Ways on How to Charge/Recharge a ...



Constant charging can lead to overcharging for a portable power station with lithium battery, which might reduce the battery's ...

## Can A Portable Power Station Charge A Car ...

If you're in a pinch with a dead car battery and a portable power station, could you potentially charge the battery enough to start the ...



## I tried charging an EV with a portable power station

But I can see how they could come in handy for emergencies when your EV's

114KWh ESS



ISO 9001 ISO 14001 PICC RoHS CE MSDS UN38.3 UK CA IEC

battery is critically low, by giving it enough charge to get you to a proper charging station.

### Can a Portable Power Station Be Charged and Used at the ...

That's because the battery is constantly being charged and discharged at once, which can result in more wear compared to a standard charge/discharge cycle. Just like phone ...



### I tried charging an EV with a portable power station

But I can see how they could come in handy for emergencies when your EV's battery is critically low, by giving it enough charge to get you to a proper charging station.

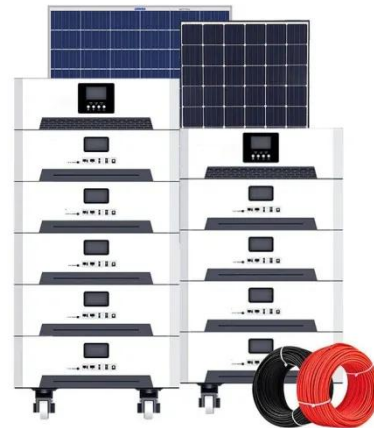


 LFP 280Ah C&I

### Can you leave a portable power station plugged in all the ...

while leaving a portable power station plugged in all the time may offer

convenience, it also raises valid concerns regarding battery life, energy consumption, and ...



## How to Charge a Portable Power Station?

In this comprehensive guide, we will walk you through all you need to know about how to charge a portable ...

## Can you use a lithium battery power station while charging it?

Lithium battery power stations have gained popularity as portable and versatile energy solutions for various applications, including outdoor activities, emergency power ...



## 5 Ways to Recharge a Portable Power Station

These giant removable batteries provide a mobile power source to quickly

recharge your station. For example, a 300Wh battery pack can fully recharge a 500Wh station ...



---

## Can A Portable Power Station Charge A Car Battery?

If you're in a pinch with a dead car battery and a portable power station, could you potentially charge the battery enough to start the car? Let's take a look.



---

## 4 Best Ways on How to Charge/Recharge a Portable Power Station

Constant charging can lead to overcharging for a portable power station with lithium battery, which might reduce the battery's lifespan and efficiency. Most models have systems to ...



---

## Should You Fully Charge a Newly Purchased Portable Power Station?

Should It Always Be Fully Charged? So,

should the portable power station always be kept fully charged? The answer is no. Lithium-ion batteries, commonly used in portable power ...



### **Frequently Asked Questions: Lithium Power Stations**

iTechworld's power station range can be charged one of 5 ways- 240v AC mains (home), 12V car cigarette socket, solar, generator or an additional battery. Can I use it in a ...

### **Frequently Asked Questions: Lithium Power ...**

iTechworld's power station range can be charged one of 5 ways- 240v AC mains (home), 12V car cigarette socket, solar, generator ...



## **Contact Us**

For catalog requests, pricing, or partnerships, please contact:

**BLINK SOLAR**

Phone: +48-22-555-9876

Email: [info@blinkartdesign.pl](mailto:info@blinkartdesign.pl)

Website: <https://www.blinkartdesign.pl>

*Scan QR code to visit our website:*

