

## BLINK SOLAR

# Can a 48v20a solar container lithium battery be connected to an inverter



## Overview

---

The short answer is no - proper inverter matching is crucial for optimal performance and safety. Let's examine the key compatibility factors for lithium battery and LiFePO4 battery systems. Does a lithium battery work with a solar inverter?

While lithium batteries can't work with every inverter, most modern solar and off-grid inverters now offer lithium compatibility. For optimal performance in home energy stems, choose an inverter specifically designed for lithium battery or LiFePO4 battery systems, and always verify compatibility before purchasing.

How many batteries can a solar inverter hold?

Holds 225 Batteries AA AAA C D Cell 9V 3V Lithium (Red) Connecting a battery to a solar inverter is crucial for maximizing the efficiency of your solar energy system. Batteries store excess energy generated by solar panels, allowing for use during cloudy days or at night. Here are some key points to consider:.

How do I choose a solar inverter?

For optimal performance in home energy stems, choose an inverter specifically designed for lithium battery or LiFePO4 battery systems, and always verify compatibility before purchasing. Remember: Proper inverter pairing ensures safety, maximizes battery life, and improves overall system efficiency in your solar energy setup.

Are all inverters compatible with all lithium batteries?

Not all inverters are compatible with all lithium batteries. Therefore, it is crucial to ensure that the inverter you choose is designed to work with the specific type of lithium battery you plan to use. Check Manufacturer Specifications: Both the battery and inverter manufacturers typically provide a list of compatible products.

## Can a 48v20a solar container lithium battery be connected to an inverter

---



### How to Connect Battery to Solar Inverter: A Step-by-Step ...

Unlock the full potential of solar power by mastering the connection between your battery and solar inverter. This comprehensive guide simplifies setup, detailing types of ...

---

### Solar Inverters with Lithium Batteries

A solar inverter with a lithium battery is a powerful combination that offers efficiency, longevity, and smart energy

...



---

### How Many Batteries can Be Connected To An ...

An inverter is only as good as the power source. Discover how many batteries you can connect to an inverter and get the most out of it.



## Connecting Multiple Batteries to an Inverter: Easy Guide

Need more battery capacity on your inverter? Let's look at how to add more batteries and how many batteries you can connect to an inverter.



2MW / 5MWh  
Customizable



## How to Connect an Inverter to a Battery: Step ...

Learn how to safely and efficiently connect an inverter to a battery with our step-by-step guide. Includes brand-specific tips for Solis, ...

## Batteries For Inverters (Complete Guide)

Best Batteries For Inverters Although there is a range of home energy storage batteries available on the market, you need to find the right type ...



## Hybrid Inverter and Lithium Batteries: Setup Guide and Best ...

set up communication between lithium batteries and a hybrid inverter with our



detailed step-by-step guide. Ensure optimal performance and longevity of your energy storage system by ...

## How to integrate a lithium battery pack into a solar energy ...

Connect the Battery Pack to the Inverter: The battery pack will need to be connected to the inverter using a DC cable. The inverter is responsible for converting the DC ...



## How do I match a lithium solar battery with an inverter?

Conclusion Matching a lithium solar battery with an inverter is not as complicated as it might seem. By considering factors like voltage compatibility, capacity, power rating, surge ...

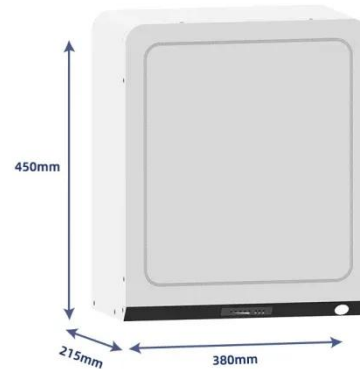


51.2V 150AH, 7.68KWH

## Understanding the Basics of Connecting ...

2. Battery Management System (BMS) A Battery Management System (BMS) is

integral in lithium batteries. The BMS controls the ...

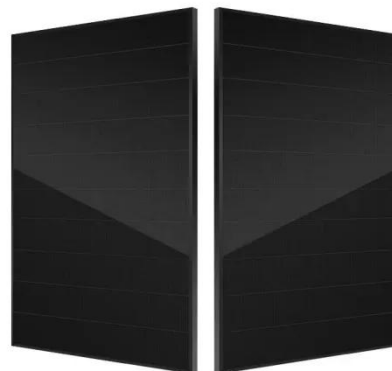


### Can I add batteries to a microinverter based ...

I'd like a home battery. Is 10kWh enough? Can I build my own house battery? Can I use my generator to fool the grid connected solar into working ...

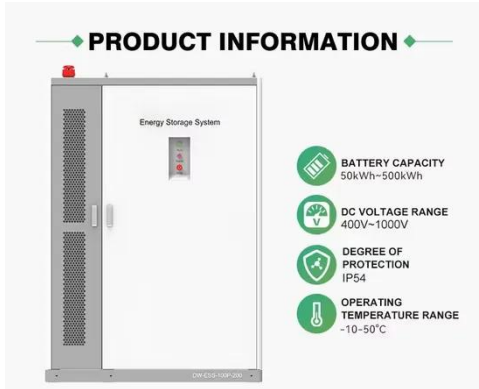
### How to Connect an Inverter to a Battery: Step-by-Step Guide ...

Learn how to safely and efficiently connect an inverter to a battery with our step-by-step guide. Includes brand-specific tips for Solis, Deye, Megarevo, SRNE, and more. Perfect ...



### Complete Guide to Inverter Batteries - NPP POWER

Inverter batteries is a rechargeable battery built to supply backup power for



inverters, which convert direct current (DC) into alternating current (AC). These batteries store ...

## Battery connection for inverter

This article enlightens the features, risks and connectivity of inverter and the battery along with specific safety measures, its hazards ...



## How to connect solar lithium battery

Utilizing a solar lithium battery with a standard inverter is contingent upon compatibility ratings. Standard inverters, particularly sine ...

## Can Lithium Batteries Work With Any Type of Inverter?

The Bottom Line While lithium batteries can't work with every inverter, most

modern solar and off-grid inverters now offer lithium compatibility. For optimal performance in home ...



### How to Safely Connect a Battery to an ...



Learn how to safely connect your batteries to your inverter with our guide. Avoid common wiring mistakes to optimize performance ...

### How do I match a lithium solar battery with ...

Conclusion Matching a lithium solar battery with an inverter is not as complicated as it might seem. By considering factors like voltage ...



### How to connect solar lithium battery , NenPower

Utilizing a solar lithium battery with a standard inverter is contingent upon

compatibility ratings. Standard inverters, particularly sine wave types, can often work with ...



---

## How to Add a Lithium Battery to an Existing Solar System

Connecting the System The new battery inverter is installed alongside your existing solar inverter and connected to your main electrical panel. The lithium battery pack is ...



---

## Do I need a special inverter for Lithium ...

Special features for advanced batteries: Some advanced lithium batteries have a Battery Management System (BMS) that monitors ...



---

## Importance of Compatibility Between Inverter ...

The rise of renewable energy, particularly solar power, has brought

significant advancements in energy storage solutions. Among ...



### **Connecting Multiple Batteries to an Inverter: ...**

Need more battery capacity on your inverter? Let's look at how to add more batteries and how many batteries you can connect to an inverter.

### **How to Safely Connect a Battery to an Inverter: A Step-by ...**

Learn how to safely connect your batteries to your inverter with our guide. Avoid common wiring mistakes to optimize performance and extend system life.



### **Hybrid Inverter and Lithium Batteries: Setup ...**

set up communication between lithium batteries and a hybrid inverter with our

## GRADE A BATTERY

LiFePO4 battery will not burn when overcharged, over discharged, overcurrent or short circuited and can withstand high temperatures without decomposition.



detailed step-by-step guide. Ensure optimal performance and longevity of ...

## Can Lithium Batteries Work With Any Type of ...

The Bottom Line While lithium batteries can't work with every inverter, most modern solar and off-grid inverters now offer lithium ...



## Contact Us

For catalog requests, pricing, or partnerships, please contact:

### **BLINK SOLAR**

Phone: +48-22-555-9876

Email: [info@blinkartdesign.pl](mailto:info@blinkartdesign.pl)

Website: <https://www.blinkartdesign.pl>

Scan QR code to visit our website:

