

**BLINK SOLAR**

# Battery inverter 48v to 220v



## Overview

---

What is a 48 watt inverter?

48V 2000W power inverter with universal socket and USB port, modified sine wave or pure sine wave output waveform are available. Option for 110V/120V or 220V/230V/240V AC 50Hz/60Hz, suitable DC to AC inverter for home use to charge TV, laptop, fans, lights and other appliances. Storage temperature of this 2000 watt inverter between -30 °C to +70 °C.

How does a 48V power inverter work?

In terms of functionality, a 48V power inverter typically consists of several key components. These include a DC input, an inverter circuit that converts DC to AC power, control electronics for regulating the output voltage and frequency, and output sockets or terminals to connect AC-powered devices.

How much power does a 5000W inverter use?

5000W 48V DC to 220V AC pure sine wave inverter. This inverter operates with a 48V DC voltage compatible with SOLISE lithium batteries. It transforms 48V DC (direct current) into 220V AC (alternating current). Peak power : 10 000W <3sec. STANDARDS Certifications : RoHS I CE Warranty - 2 years.

Can a 48V inverter be rated at 2 kVA?

In this post I have explained a simple 48V inverter circuit which may be rated at as high as 2 KVA. The entire design is configured around a single IC 4047 and a few power transistors. I am a big fan of u.i am a wisp. i need an inverter design with 48volt DC input and 230volt output supply and output power in the range up to 500w.

## Battery inverter 48v to 220v

---

### DETAILS AND PACKAGING



- 1 USER MANUAL PDF
- 2 RJ45 Cable For RS485/CAN
- 3 Battery in Parallel Cables
- 4 RJ45 TO USB Monitor Cable
- 5 M8 Terminal\*4

### 10.2KW 220Vac 48Vdc All In One Inverter Charger

10.2KW pure sine wave inverter with up to 95% efficiency seamlessly converts 48V DC to 220V AC power and vice versa. Compatible with the grid, solar panels, and generators, it offers ...

### 48v 1000w Inverter, 48v to 120v/240v Power ...

A 48V 1000W inverter is an electrical device used to convert direct current (DC) power from a 48-volt battery or power source into alternating current ...



### 48v Pure Sine Wave Inverter

Affordable price 300 watt 48 volt pure sine wave inverter, 50/60Hz output frequency can be chosen. DC 48V to AC 110V/220V/230V/240V, ...



## 10.2KW Solar Hybrid Inverter All in One, 48V DC to 220V ...

10.2KW Solar Hybrid Inverter All in One, 48V DC to 220V-230V AC On/Off Grid Pure Sine Wave Solar Inverter with 160A MPPT Charge Controller for Home Appliances, Work ...



## Inverter 5000W 48V DC to 220V AC

This inverter operates with a 48V DC voltage compatible with SOLISE lithium batteries. It transforms 48V DC (direct current) into 220V AC (alternating ...

## Best 48V DC to 220VAC Inverters for Reliable Off-Grid and ...

Choosing the right 48V DC to 220VAC inverter is essential for powering home appliances, solar off-grid systems, and recreational vehicles efficiently. These inverters convert ...



## 10.2KW Solar Hybrid Inverter All in One, 48V ...

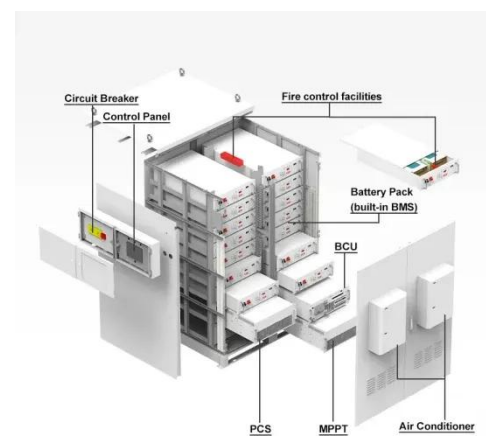
10.2KW Solar Hybrid Inverter All in One, 48V DC to 220V-230V AC On/Off Grid



Pure Sine Wave Solar Inverter with 160A MPPT ...

### Anern 6200W Hybrid Solar Inverter 48V DC to 220-230VAC, ...

About this item ?PURE SINE WAVE INVERTER?6200W Off-Grid Solar Inverter, 48V, Built-in 120A MPPT Charge Controller, Pure Sine Wave Inverter, Single-phase Output ...



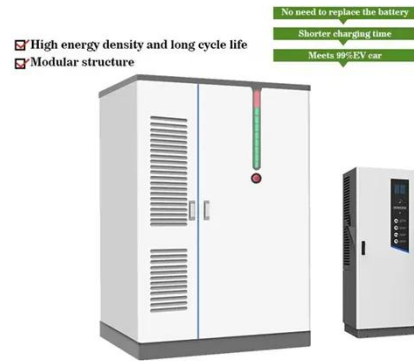
### Amazon : 220 Volt Inverter

PowMr 10200W Solar Inverter 48V DC to 220V/230V AC Pure Sine Wave Power Inverter Built-in 160A MPPT Controller 10000W Hybrid Inverter for Home RV Off-Grid System, for 48V Lead ...

### 6200W 220Vac 48Vdc All In One Inverter ...

6200Watt all in one inverter of 220V AC putput with a 48v MPPT solar charge

controller and AC battery charger integrated.



### 10.2KW 220Vac 48Vdc All In One Inverter ...

10.2KW pure sine wave inverter with up to 95% efficiency seamlessly converts 48V DC to 220V AC power and vice versa. Compatible with the ...



### 48v Inverter, 48v DC to 120v/220v AC Power ...

A 48V power inverter is a device used to convert direct current (DC) electrical power from a 48-volt battery or DC power source into alternating current ...



### 48v 3000w Inverter, 48v to 120v/220v Power ...

Powerful 3000 watt 48 volt inverter for home use. High conversion efficiency



from DC battery power to AC household power. Adopts with intelligent ...

### Solar 48V Inverters For Sale , 48v DC to 220v AC

Solar 48V inverters for large-scale solar and backup power systems. There are different varieties of such inverters to power commercial and residential applications by converting 48V DC into ...



### Best 48VDC to 220VAC Inverters for Reliable Off-Grid Power ...

This low-frequency pure sine wave inverter promises high reliability for home or industrial applications demanding high wattage, delivering stable conversions suitable for ...



### Inverter 5000W 48V DC to 220V AC

This inverter operates with a 48V DC voltage compatible with SOLISE lithium batteries. It transforms 48V DC (direct

current) into 220V AC (alternating current).



- IP65/IP55 OUTDOOR CABINET
- OUTDOOR CABINET WITH AIR CONDITIONER
- OUTDOOR ENERGY STORAGE CABINET
- 19 INCH

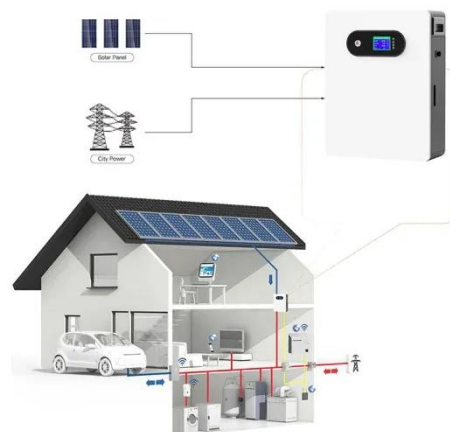


### 48v 1500w Inverter, 48v to 110v/220v Power ...

1500W 48V DC to AC power inverter for sale online, efficient and reliable. Inverter 1500 watt price is reasonable. This modified sine wave inverter ...

### 48v dc to 230v 220v ac inverters 240v

Xindun power factory sales inverter 48v to 220v, 48v to 240v, 48vdc to 230vac. AC inverters high frequency design, high power density, high efficiency, low no-load loss.



### How to Choose the Best Inverter 48v 220v for Your Power ...

When choosing the best inverter 48v 220v for your energy system, prioritize

models with high pure sine wave output, efficiency above 90%, robust overload protection, and ...



---

### **Anern 6200W Hybrid Solar Inverter 48V DC to ...**

About this item ?PURE SINE WAVE  
INVERTER?6200W ...



---

**18650** 3.7V  
RECHARGEABLE BATTERY Li-ion  
**2000mAh**



### **48v Inverter, 48v DC to 120v/220v AC Power Inverter , inverter...**

A 48V power inverter is a device used to convert direct current (DC) electrical power from a 48-volt battery or DC power source into alternating current (AC) power.

---

## **Contact Us**

For catalog requests, pricing, or partnerships, please contact:

**BLINK SOLAR**

Phone: +48-22-555-9876

Email: [info@blinkartdesign.pl](mailto:info@blinkartdesign.pl)

Website: <https://www.blinkartdesign.pl>

*Scan QR code to visit our website:*

