

BLINK SOLAR

Base station power engineering construction management



Overview

How are power station foundations constructed?

The construction of the power station foundations is carried out in accordance with a detailed programme drawn up to provide the various foundations and general site works, in the sequence necessary to enable the building work and plant installation to proceed in accordance with the overall construction programme.

What is the primary architectural objective of a power station?

The prime architectural objective would be to ensure the best possible appearance of the project, including buildings, structures and plant as seen from such viewpoints as are predominant in the public's perception of a power station, and to present a confident and consistent image as part of the CEGB's corporate design policy.

What makes a good power station design?

The best power station design is the one for which consent can be obtained, and to achieve this economically in landscape terms, a range of expertise and activities is required. The proposed site must be visually analysed by the appointed landscape architect, who will seek to minimise adverse effects of the project.

What is the evaluation index system for power engineering construction quality?

Firstly, based on systematic thinking and practice in China, the CQMS framework is proposed, and the evaluation index system including organizational performance, management behaviour performance, and entity performance related to power engineering construction quality is established.

Base station power engineering construction management



Optimization Control Strategy for Base Stations Based on ...

On the basis of ensuring smooth user communication and normal operation of base stations, it realizes orderly regulation of energy storage for large-scale base stations, ...

Construction Management Mode of Power Line ...

By collecting, storing, and analyzing massive amounts of power line data, it can provide more accurate and comprehensive data support for power enterprises, and help them ...

Our Lifepo4 batteries can be connected in parallels and in series for larger capacity and voltage.

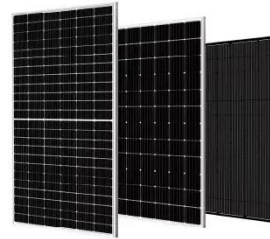


Systematic Thinking and Evaluation of Construction Quality Management

Power engineering is complex, involving many participants, numerous management factors, and different stages. To improve the quality management level of power engineering ...

Construction Site Management and Quality Control of ...

New energy power generation projects are becoming increasingly important, but there are many problems in the on-site construction management of ground photovoltaic power stations, such ...



Power Engineering Construction Technology and ...

The power engineering unit should strengthen the technical management of power engineering, improve the professional quality of engineering personnel, and pay attention to ...

Power Station Construction

Power station construction refers to the process of designing and building facilities for generating electrical power, encompassing various types such as oil-fired, coal-fired, and nuclear power ...



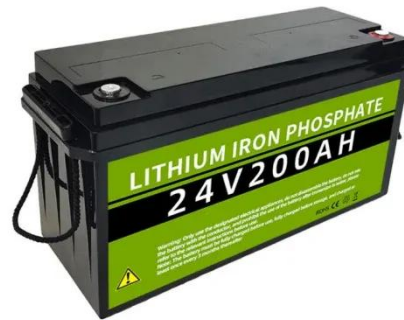
Hitachi Energy Shanghai Power System Engineering Co., Ltd.



We focus on engineering design and equipment sets for conventional substations, prefabricated substations, mobile substations, and port shore power. It provides ...

Shanghai Electric Chengguang Power Engineering Co.,Ltd.

Shanghai Municipal Housing and Urban-Rural Construction Management Committee has awarded the following Certificates to the Company:
Construction Enterprise Qualification ...



Detailed Power Engineering & Design

Big picture engineering No matter what segment of the power market your project is in, we have the expertise and local experience to provide the detailed engineering services your project ...

Contact Us

For catalog requests, pricing, or partnerships, please contact:

BLINK SOLAR

Phone: +48-22-555-9876

Email: info@blinkartdesign.pl

Website: <https://www.blinkartdesign.pl>

Scan QR code to visit our website:

